

Suzuki Jimny 1.5i October 2018 on



This bar has detachable side wings that can be replaced if damaged; aerial and spotlight positions, 2 jacking positions, 2 recovery eye and 2 hook locations. (Recovery eyes & hooks are not provided in this kit). The bar has been developed to accept up to a 9500Lb. Warn low mount winch.

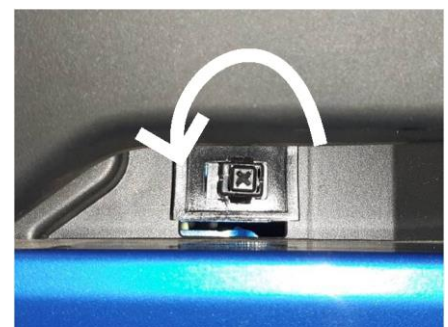
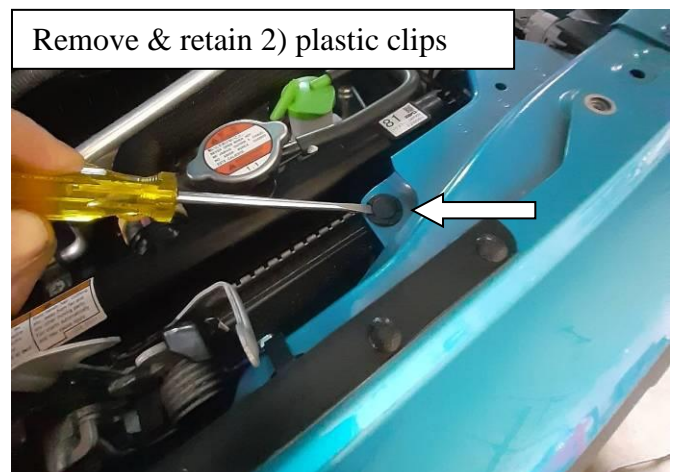
This bar is compatible with the Air Bag system of this vehicle. The compliance label must be attached on a surface of the bar so it can be read and located where it will not sustain environmental damage. The vehicle make and model must be marked on the label with a permanent marker.

Fitting Instructions

1. **Remove the bumper** and grille from the vehicle.
2. **Front grille:** Open the bonnet and remove two plastic clips that attach the front grille to the top radiator cross member, just forward of the radiator. Keep clips for when re-fitting the grille.

Locate two plastic clips at the bottom left and right hand sides of the grille. Rotate these around 90 deg. The rest of the grille is held onto position with plastic push/pull clips. These will release when gently pulling forward on the grille.

Un-clip indicators when removing grille.



Rotate clip 90 Deg to release using Phillips head screwdriver

3. With the grille removed, unclip and remove the upper plastic radiator shroud. Retain shroud and clips for re-fitting.



4. With the radiator shroud gone, remove the 4) clips running along the top of the bumper.

5. Remove plastic clips that attach the front wheel arch liner to the bumper. Cut and remove two aluminium rivets each side. Cut using side cutters, accessing from the front.

Unfasten inner guard from bumper

6. Undo two screws each side attaching bumper to the flairs (retain screws).

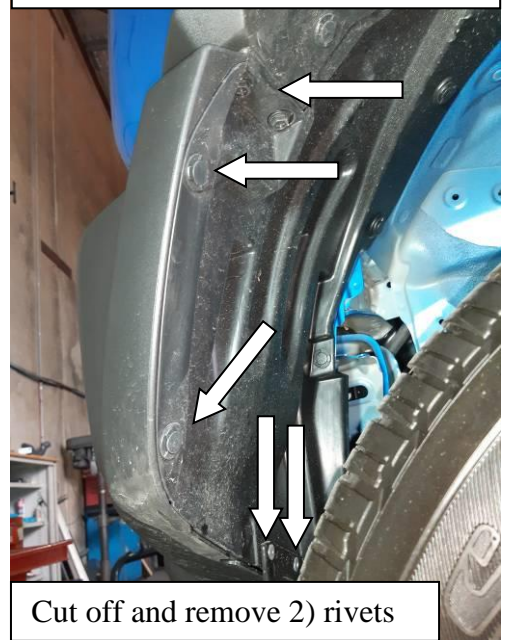
7. Remove 3) fasteners along the bottom of the bumper.

8. Reach behind the bumper and un-clip the driving lights and headlamp washer line (5 clips all up).

Lift the bumper off the vehicle and remove the headlight washer tubes and washer nozzles. Remove the OE driving lamps. Retain parts for later fitment.

9. Remove the lower plastic radiator shroud from the vehicle and discard.

10. Once the bumper is removed, re-fit the front upper radiator shroud and front grille with original clips and fasteners, following the previous steps in reverse order.



11. Re-fit the screws that fastened the plastic inner guard to the flare.

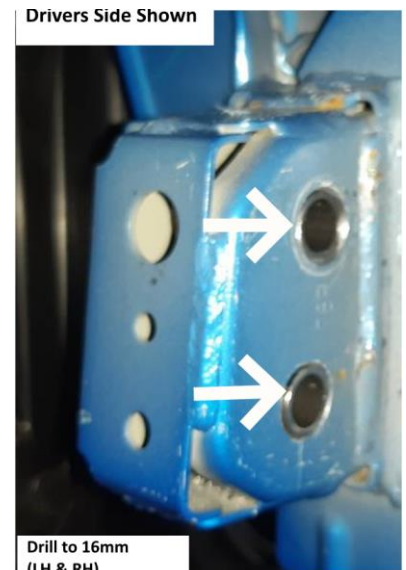
12. Fitting Mounts:

Prepare the chassis:

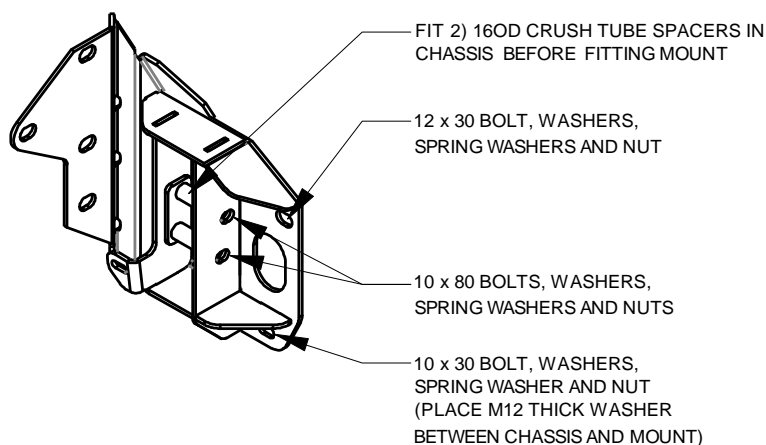
Drill the existing lower 8mm holes in the L/H and R/H crash cans to 11mm, so they can accept an M10 bolt (**outside face only**).

Use a step drill to increase the existing inside holes in the L/H and R/H crash cans to 16mm, so they can accept a 16mm crush tube (**inside face only**).

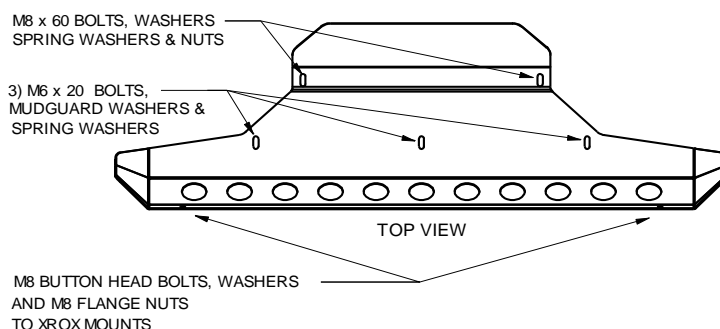
13. Insert the supplied 16mm OD crush tubes into the chassis, before fitting the mounts. Follow the diagram below:



FITTING MOUNTS TO CHASSIS:
(DRIVERS SIDE SHOWN)



14. **Installing the Xrox centre:** Loosely fit the Centre to the mounts using 8) 12x30 bolts, washers, spring washers and nuts.
15. **Installing Xrox wings:** Before tightening the centre, fit the wings using 6) 10x25 bolts, 4) 12x40 button head bolts, nuts, washers and spring washers. Once wings are fitted and tightened, align the bar so it is level and the wings follow the line of the bodywork. Tighten all bolts. Press the tube inserts into the ends of the wings. Use sikaflex or similar sealant to create watertight seal.
16. **Fitting the bash plate:**

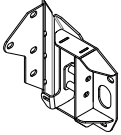
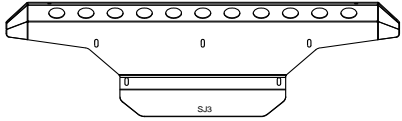
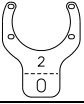


17. Trim plastic mudguards to suit the Xrox wings. **NOTE: When cutting the inner guard, ensure the bar and/or inner guard cover the top 30° of the wheel to adhere to ADR's.**
18. Re-fit the headlight squirter nozzles to the hole in the tread plate of the Xrox wings. Note: Fit the squirter labelled 'L' to the passenger side and 'R' to the drivers side. Plug in the washer lines. Using zip ties, secure them to holes in the wing tread plate, and vehicle.
19. Fit the driving lights to the wings using the light brackets provided. Fasten the lamp to the bracket using M6 fasteners. Fit the light bracket to the wing using M10x25 bolts and fasteners. Zip tie the loom to the vehicle body – or use existing clips.
20. Fit the number plate using 2) 6mm washered bolts and washered nuts.



This XROX® tube bar comprises of both **powder coated** and **painted** parts, the Side sections and centre are powder coated while the mounts are painted with a zinc enriched satin black enamel. If at any stage through the product's life the painted sections show signs of rusting, remove the rust and recoat with satin black zinc enriched enamel.

Kit Contents

Qty.	Description	Qty.	Description
1	Jimny XROX Centre (C01)	14	12mm Spring Washer
1	Jimny XROX Side Wing R/H (W89)	30	12mm Hardened Flat Washers
1	Jimny XROX Side Wing L/H (W90)	4	10x80 Bolts
2	SJ3 Mounts: 1 L/H & 1 R/H ID: SJ3 (XRSJ3-01C) 	2	10x30 Bolts
		10	10x25 Bolts
		16	10mm Nuts
		32	10mm Hardened Flat Washers
1	Bash Plate ID: SJ3 (XRSJ3-02) 	16	10mm Spring Washers
		2	M8 x 60 Bolts
		2	M8 x 25 Button Head Bolts
		6	M8 Washers
		2	M8 Spring Washers
		2	M8 Nuts
2	XRZ2 Fog light brackets ID: 2 	2	M8 Flange Nuts
		2	M6 x 20 bolts
4	42mm Long Tube Spacers (DWG#XRSJ2-01)	3	M6 Mudguard Washers
2	Plastic Tube Insert (ID 42mm)	3	M6 Spring Washers
2	Plastic Tube Insert (ID 36mm)	10	M6 Washered bolts
1	Air Bag Protection Sticker	10	M6 Flange nuts
4	12x40 button head allan bolts	6	Cable Ties
10	12x30 Bolts	1	Fitting instructions
14	12mm Nuts		

Kit Packed by:	Checked By:	Date:
----------------	-------------	-------