



7 Inch Digital XM Wireless Monitor **Operation Manual**

- Please read this manual carefully before use.
- The company reserves the right to interpret the instructions.
- Product appearance shall be subject to the real object.
- Product technology or software upgrades are subject to change without notice


Preface

Thanks for your support. Our company stick the management philosophy of “Quality First, Honest Based!”, and based on meeting customer’s requirement and supplying high quality products, perfect after–sales service as our purpose, be absorbed in offer the best products.

To ensure long–term trouble–free service of the products, please read this manual carefully before using the product.

Notes:

- 1. Do not try to open the covers. It is a high precision product. Please close the power in time if anomalies.
- 2. Do not use organic solvent clear the covers, to avoid it peel off painting.
- 3. Do not enforce to the lead wire, to avoid damage or poor connect.
- 4. Keep the product out of the dirty, direct sun, high temperature and humidity condition.
- 5. Protect the product from fall down and shock.
- 6. Please wiring as diagram strictly, if wiring wrong will lead product can’t work and even damage vehicle electrical system.
- 7. Do not use any affect operation of driving.
- 8. Do not let the product working at higher or lower than the suitable temperature of machine.



For the sake of safety, please do not watch the video while driving, except driving assist video!

5. Warranty and Service

Dear User:

First of all, thank you for choosing our products. In order for us to better serve you, before purchasing Please read this instruction carefully and keep it properly. Our company will provide you with a one–year quality guarantee Service (free warranty for one year) The warranty location is our factory.

User notice

For the following situations, the customer service center will charge a certain material cost or maintenance labor fee as appropriate when performing repairs.

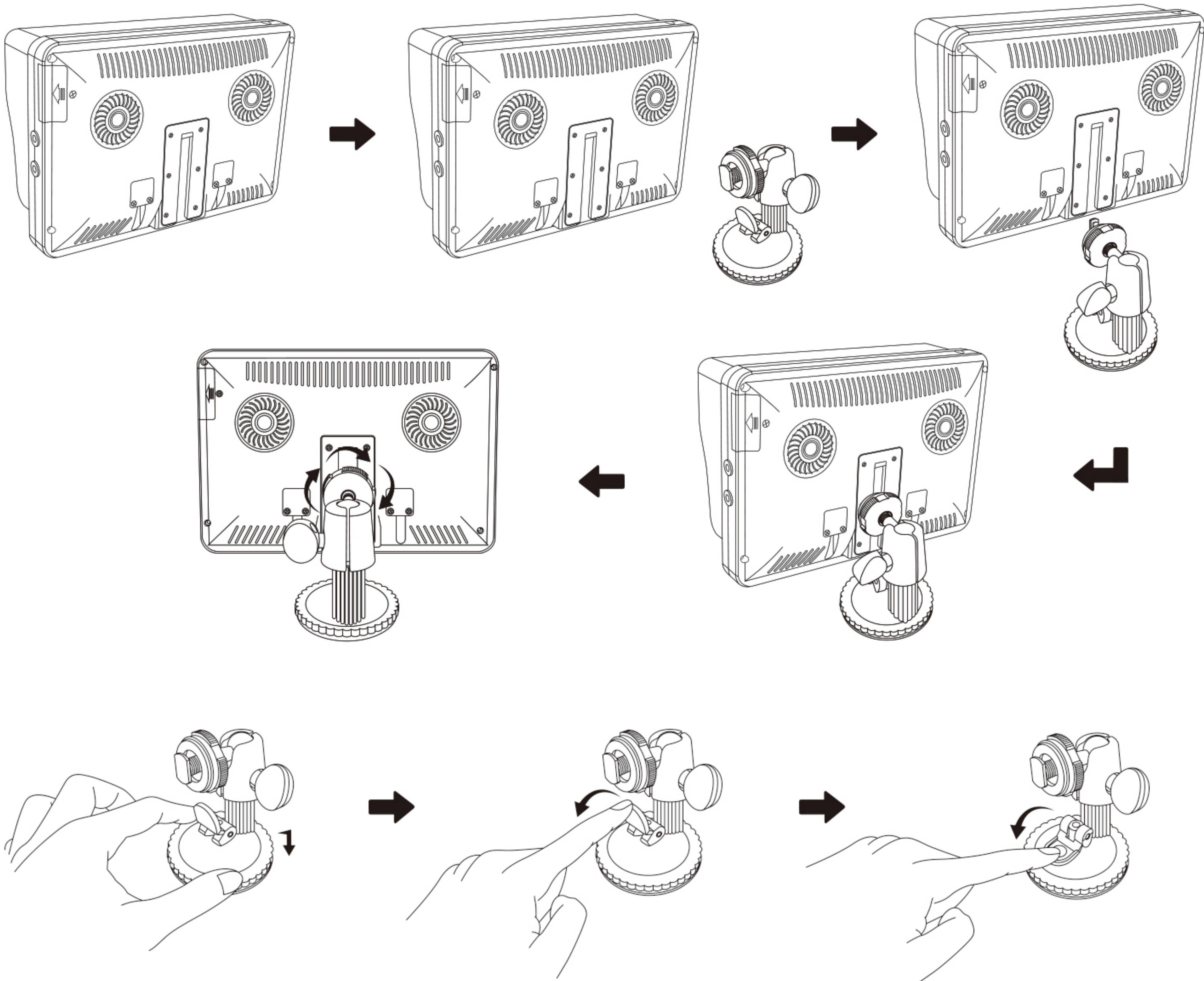
- ❶ The product or its parts have exceeded the one–year warranty period.
- ❷ Faults caused by the buyer during transportation and unloading.
- ❸ Failure caused by disassembly, repair and modification of the product without the authorization of the manufacturer.
- ❹ Faulty machine after customer’s own modification or installation of other functions.
- ❺ Failure caused by not following the usage and precautions written in the instructions (for example: broken screen/cutting of leads/ not connecting wires according to the instructions).
- ❻ If the product warranty certificate cannot be presented or the product warranty certificate presented is inconsistent with the product or has false records, we will not be responsible for free services.

Our company reserves the final right to interpret this warranty.

4. Bracket Installation

Installation of suction cup support

- 1) Place the metal tabs on the top of the scalloped stand into the slots on the back of the monitor.
- 2) Next, unscrew the bracket nut clockwise until the display is firmly connected to the bracket.
- 3) Move the support to a suitable location.
- 4) Make the bottom suction cup close to the installation site, and press the suction cup closing button firmly.



Contents

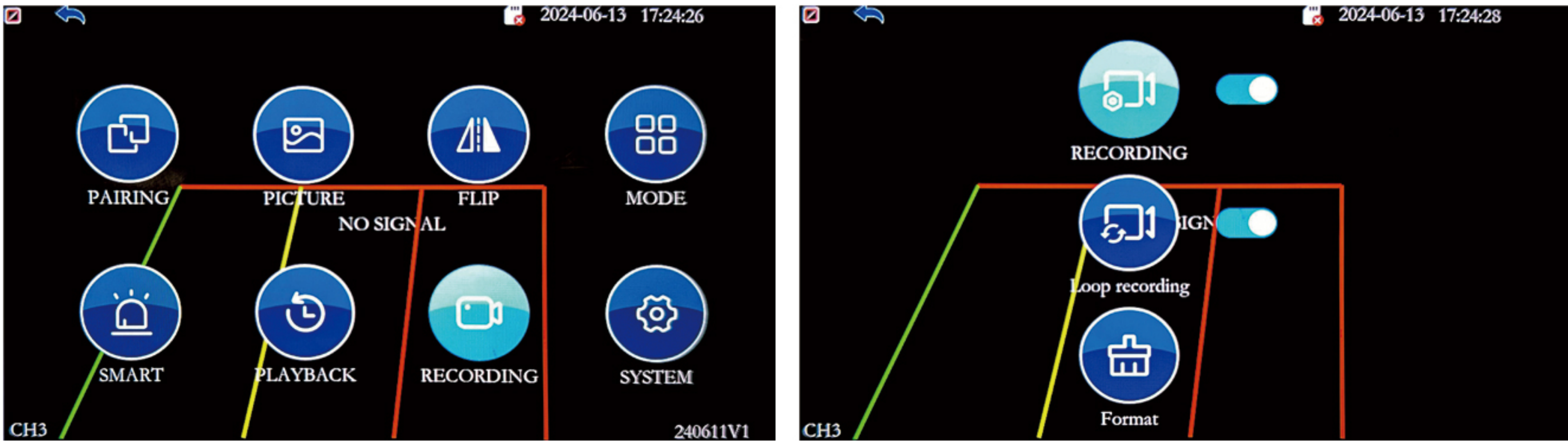
Preface	1
Contents	2
1. Product Parameters	3
2. Introduction of keys	4
3. System Menu Settings	5
3.1 Pairing setting	5
3.2 Image Setting	5
3.3 Flip Setting	6
3.4 Mode Setting	6
3.5 Smart Setting	7
3.6 Playback Setting	7
3.7 Recording Setting	8
3.8 System Setting	8
4. Bracket Installation	9
5. Quality Assurance and Service	10

1. Product Parameters

Imaging chip	7 inch
RF transmit chip	1024 x (RGB) x 600
Video format	PAL/NTSC
Brightness	450cd/m²
Contrast	500:1
Operating frequency range	2412~2484MHZ
Antenna input impedance	50Ω
Output standing wave ratio	2:1
Transmitting power	19dBm
RF transmission rate	11Mbps
Modulation mode	CCK/QPSK/BPSK/OFDM(802.11g/n/ax)
Spread spectrum mode	Frequency hopping
Transmission distance	The open space distance is divided into 500 M
Voltage	DC12V~32V
Operating temperature	−20℃ ---+70℃ RH85%MAX
Storage temperature	−30℃ ---+80℃ RH85%MAX

3.7 Recording Setting

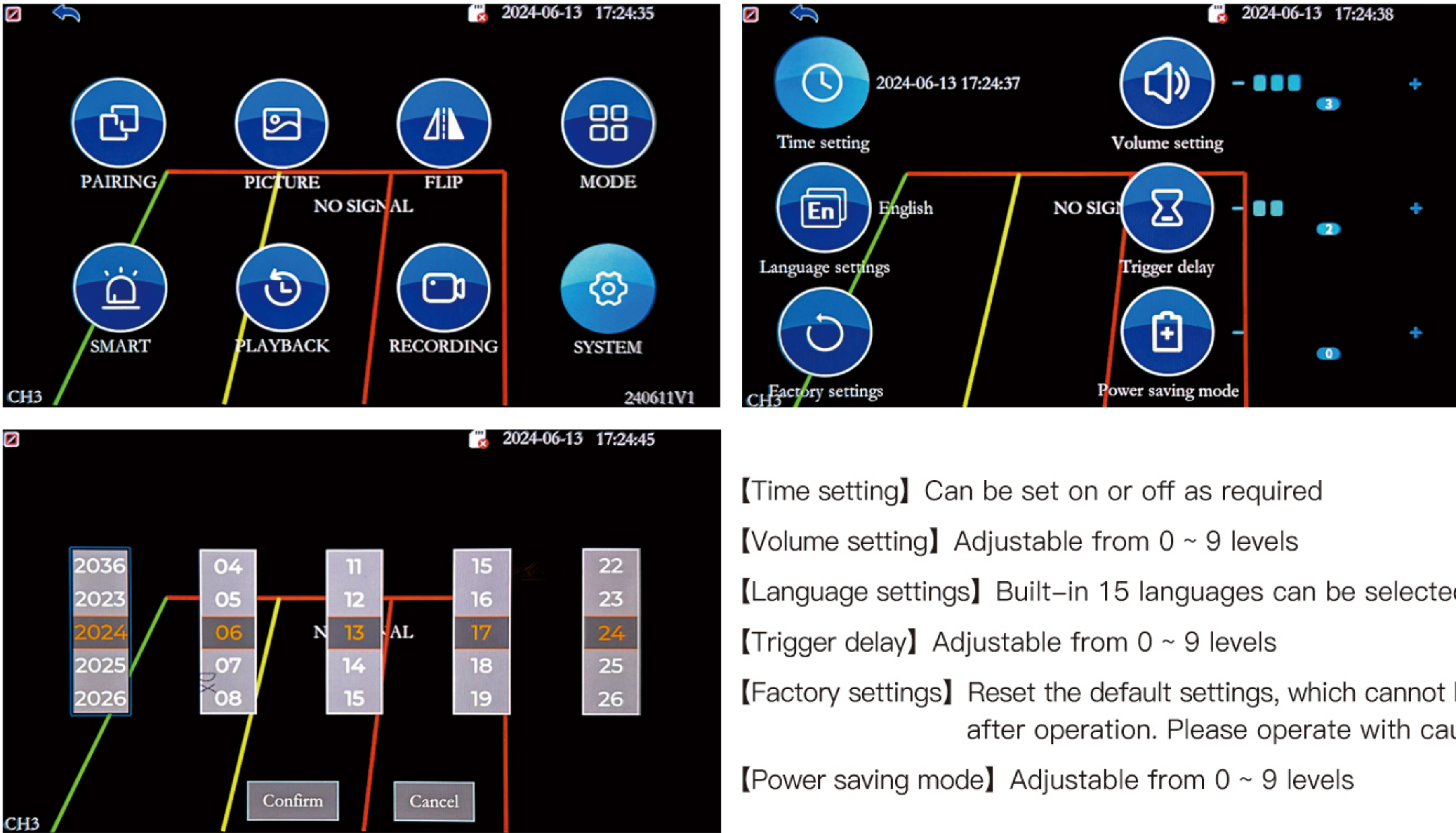
Press the M key on the panel or remote control to open the main menu, then press ▼▲ select the recording setting icon, press the CH key to confirm and enter, then press ▼▲ select the parameter to be modified, press the CH key to confirm, and press ▼▲ to adjust. After setting, press the M key to return to the main menu, and then press the M key again to exit the main menu page.



- 【Recording】 Can be set on or off as required
- 【Loop recording】 Can be set on or off as required
- 【Format】 Tips: Cannot be restored after formatting, please operate with caution

3.8 System Setting

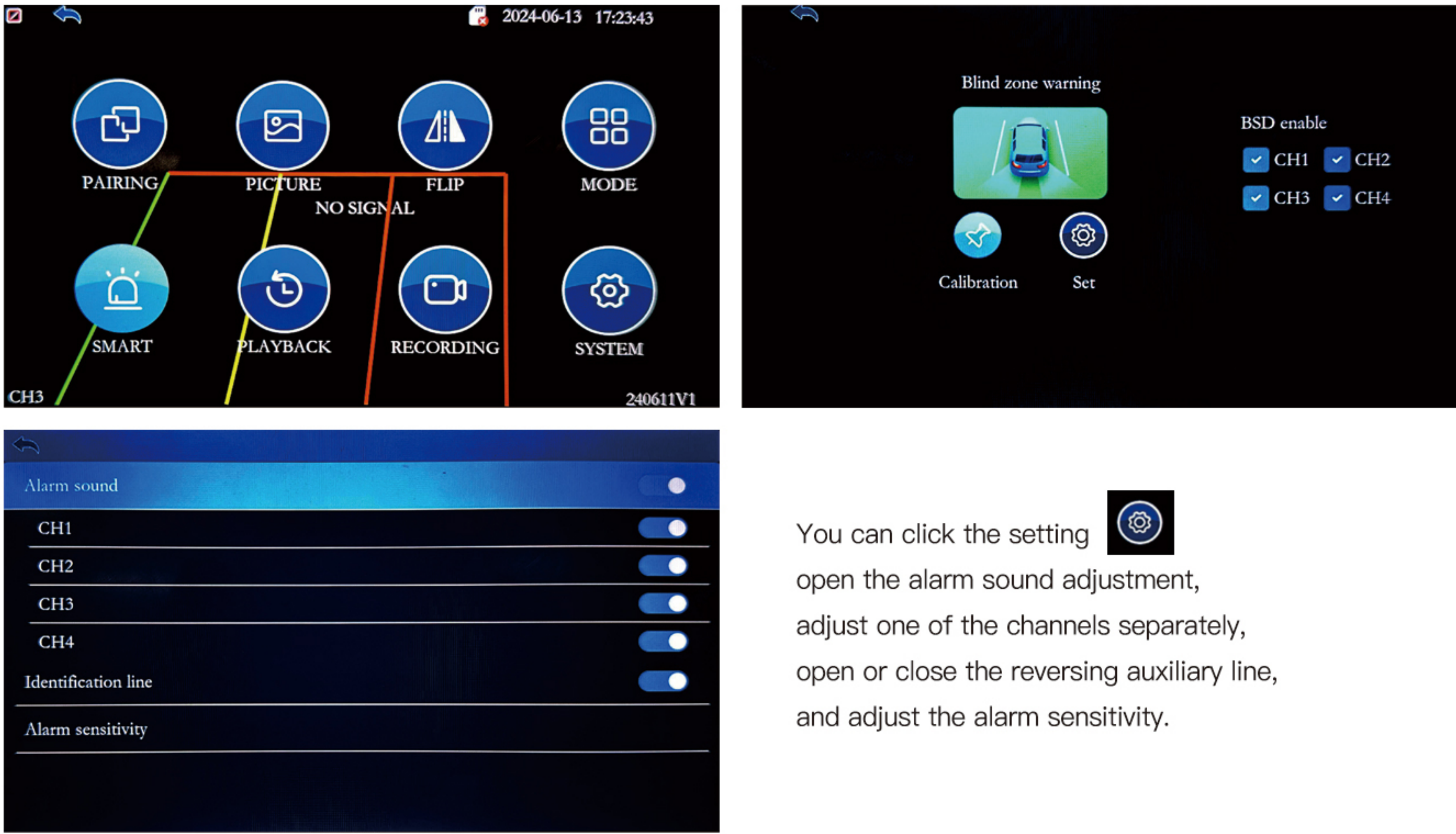
Press the M key on the panel or remote control to open the main menu, then press ▼▲ select the system setting icon, press the CH key to confirm and enter, then press ▼▲ select the parameter to be modified, press the CH key to confirm, and press ▼▲ to adjust. After setting, press the M key to return to the main menu, and then press the M key again to exit the main menu page.



- 【Time setting】 Can be set on or off as required
- 【Volume setting】 Adjustable from 0 ~ 9 levels
- 【Language settings】 Built-in 15 languages can be selected
- 【Trigger delay】 Adjustable from 0 ~ 9 levels
- 【Factory settings】 Reset the default settings, which cannot be restored after operation. Please operate with caution.
- 【Power saving mode】 Adjustable from 0 ~ 9 levels

3.5 Smart Setting

Press the M key on the panel or remote control to open the main menu, then press ▼▲ select the smart setting icon, press the CH key to confirm and enter, then press ▼▲ select the parameter to be modified, press the CH key to confirm, and press ▼▲ to adjust. After setting, press the M key to return to the main menu, and then press the M key again to exit the main menu page.



3.6 Playback Setting

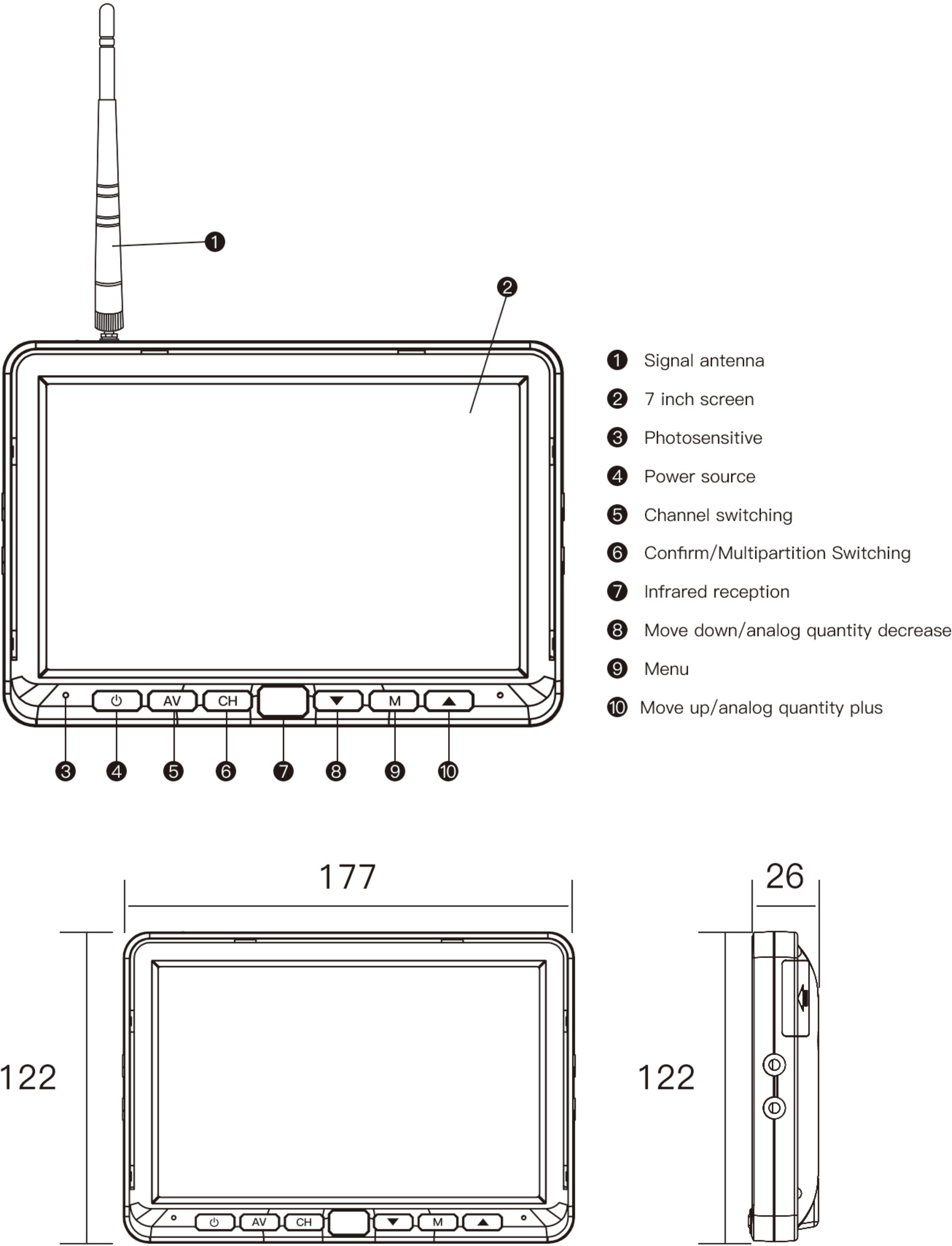
Press the M key on the panel or remote control to open the main menu, then press ▼▲ select the playback setting icon, press the CH key to confirm and enter, then press ▼▲ select the parameter to be modified, press the CH key to confirm, and press ▼▲ to adjust. After setting, press the M key to return to the main menu, and then press the M key again to exit the main menu page.



After entering the setting, you can select the channel screen to be viewed by moving ▼▲ , and press CH to confirm.

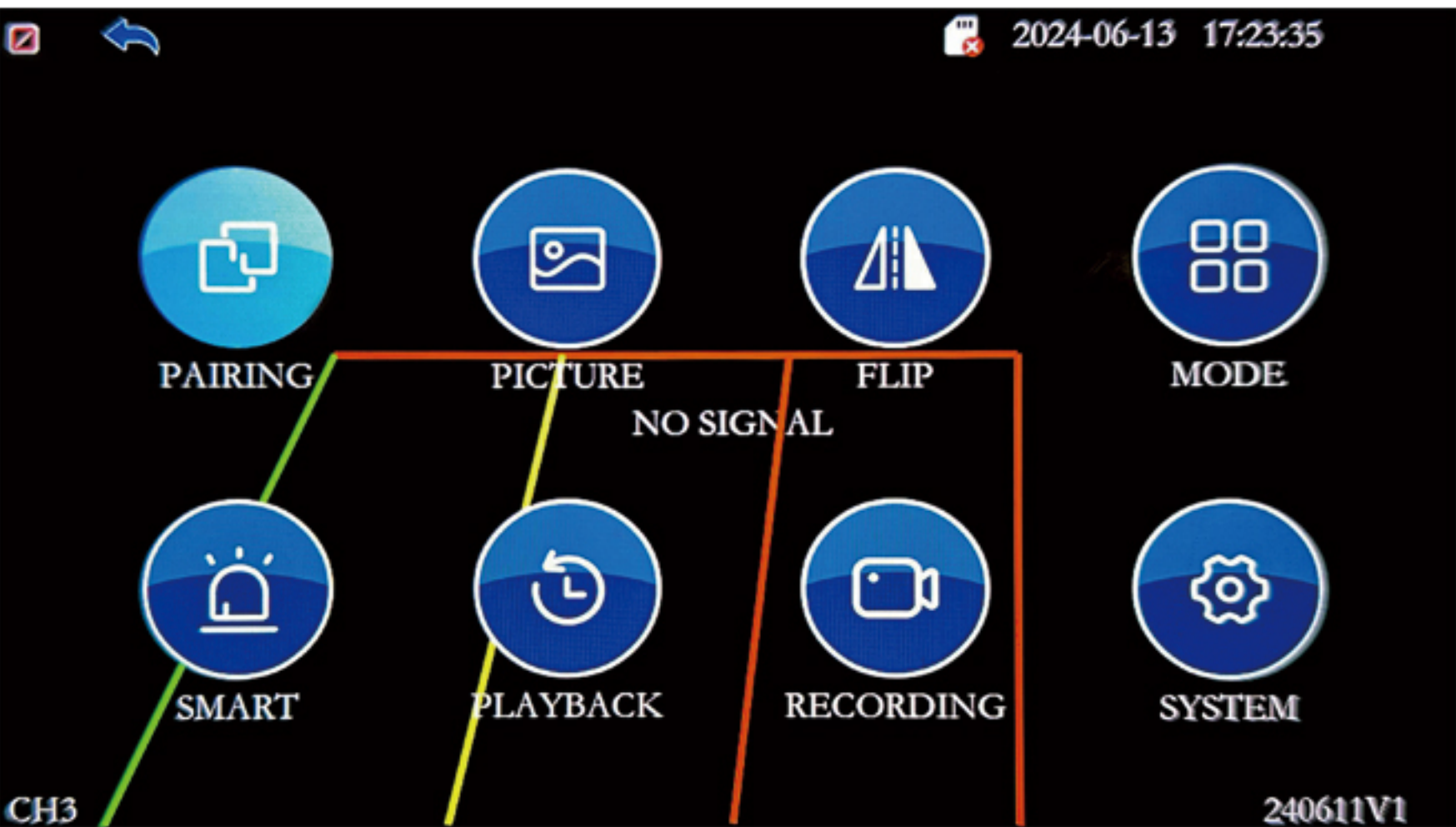
Go back Fast forward Play/Pause Refresh the record package list Delete

2. Introduction to the keys



3. System introduction

Press the menu key on the panel or the remote controller to enter the system menu interface.
Pairing Settings, Image Settings, Mirror Settings, Mode Settings, BSD Settings, Playback Settings, Recording Settings, System Settings, corresponding adjustments and modifications.



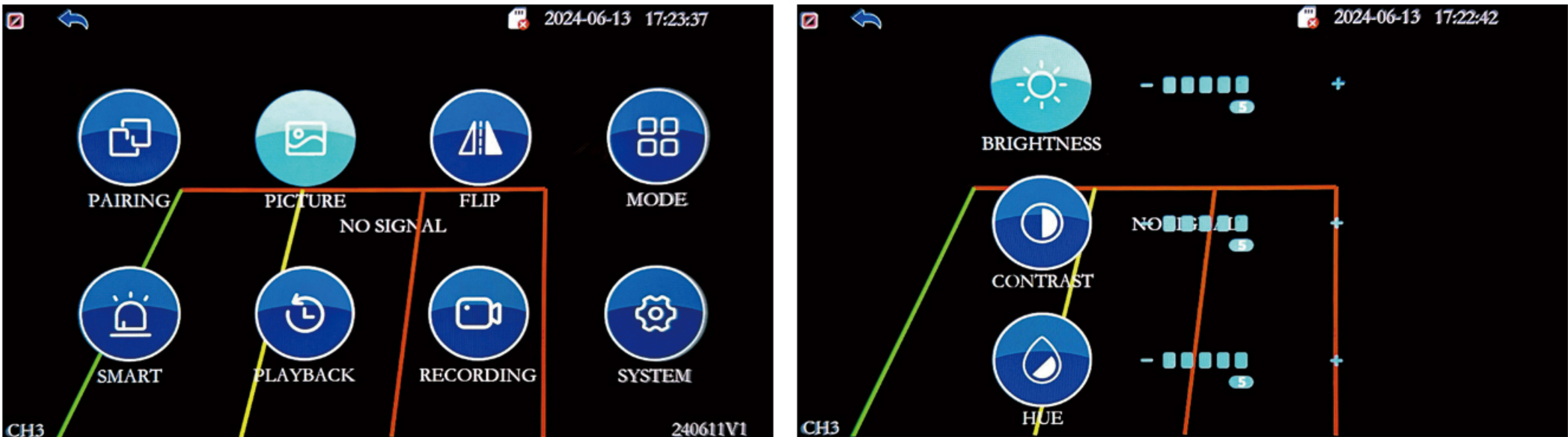
3.1 Pairing setting

Press the M key on the panel or remote control to open the menu, then press the CH key to confirm and enter the code matching interface. At this time, the monitor will display “PAIRING START 20”.



3.2 Image Setting

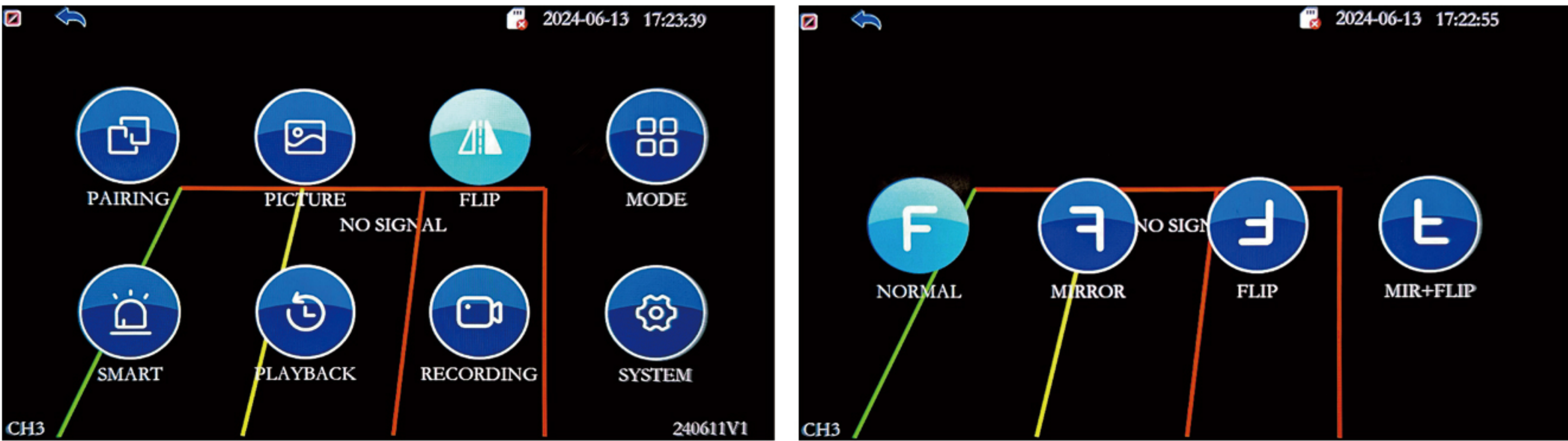
Press the M key on the panel or remote control to open the main menu, then press ▼▲
select the image setting icon, press the CH key to confirm and enter, then press ▼▲
select the parameter to be modified, press the CH key to confirm, and press ▼▲ to adjust. After setting,
press the M key to return to the main menu, and then press the M key again to exit the main menu page.



- 【Brightness】 Adjustable from 0 ~ 9 levels
- 【Contrast】 Adjustable from 0 ~ 9 levels
- 【Hue】 Adjustable from 0 ~ 9 levels

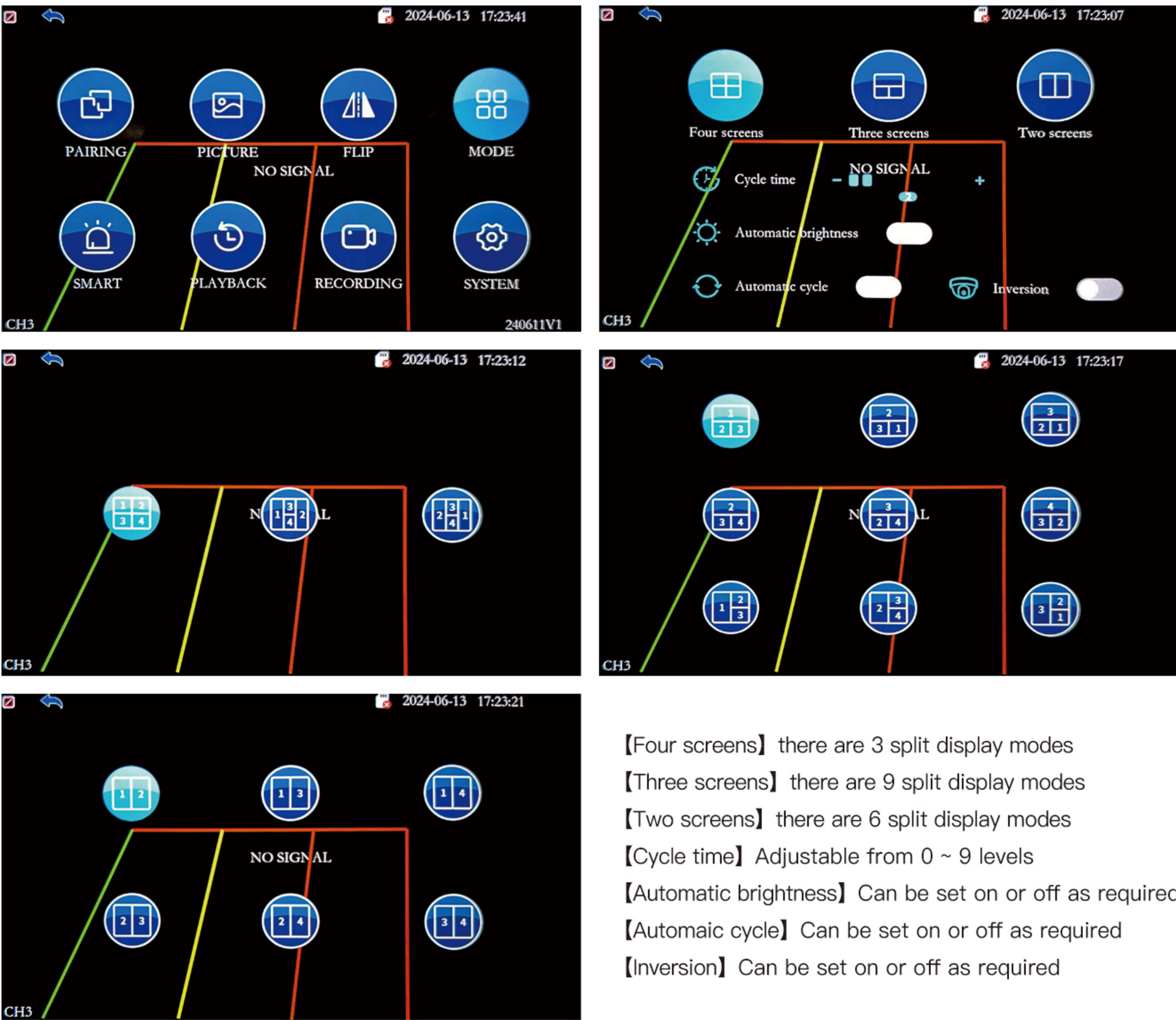
3.3 Flip Setting

Press the M key on the panel or remote control to open the main menu, then press ▼▲
select the flip setting icon, press the CH key to confirm and enter, then press ▼▲
select the parameter to be modified, press the CH key to confirm, and press ▼▲ to adjust. After setting,
press the M key to return to the main menu, and then press the M key again to exit the main menu page.



3.4 Mode Setting

Press the M key on the panel or remote control to open the main menu, then press ▼▲
select the mode setting icon, press the CH key to confirm and enter, then press ▼▲
select the parameter to be modified, press the CH key to confirm, and press ▼▲ to adjust. After setting,
press the M key to return to the main menu, and then press the M key again to exit the main menu page.



- 【Four screens】 there are 3 split display modes
- 【Three screens】 there are 9 split display modes
- 【Two screens】 there are 6 split display modes
- 【Cycle time】 Adjustable from 0 ~ 9 levels
- 【Automatic brightness】 Can be set on or off as required
- 【Automatic cycle】 Can be set on or off as required
- 【Inversion】 Can be set on or off as required