

# PACKAGE CONTAINS

## FOR LDV T60 2017 - 2022



1 x easy up strut  
*(passenger side)*

2 x rubbers

1 x slow down strut  
*(driver side)*

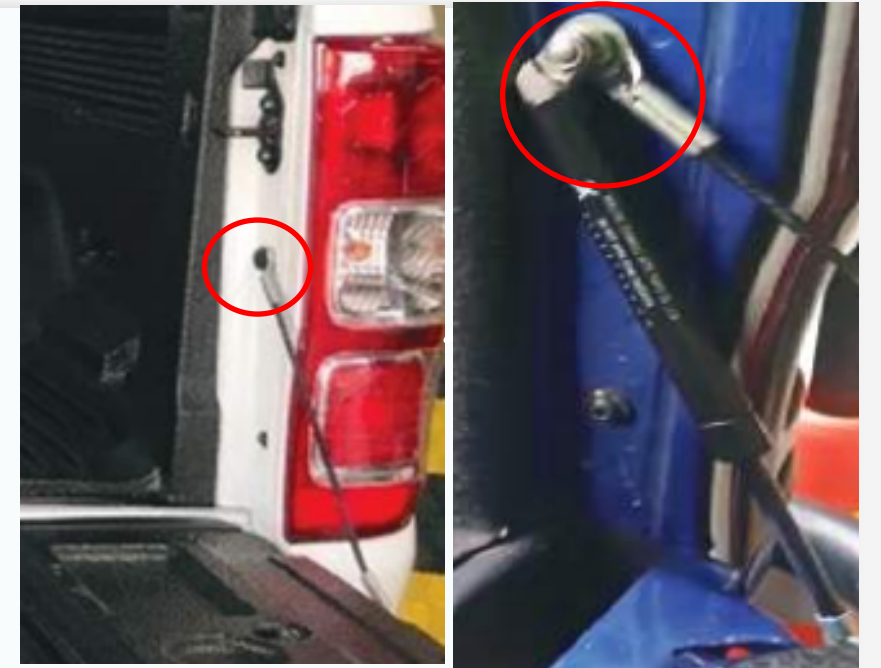
# INSTALLATION INSTRUCTIONS

## FOR LDV T60 2017 - 2022

**\*\* Installation begins from the Driver Side \*\***

# 01

- Remove the bolt and cable from the body as shown. Install the slow down strut. Attach the cable into the strut bolt first, followed by the factory washer.
- Ensure when tightening, the cable is sitting on the shoulder of the bolt and the cable remains free.



# 02

- Remove the factory bolt from the hinge closest to the tub and install the strut bracket as shown.
- Ensure that the lip of the bracket sits under the hinge.



# 03

- Now you have done the installation for slow down strut.
- Repeat the same process on the passenger side for the easy up strut.
- Once the easy up strut is installed let the tailgate down and remove the plastic spacer from easy up strut.



# 04

- Clean the lip of the tailgate as shown and stick the rubber with the angle facing in. (This is to fix the motion path of cables so they don't get caught any more)

