



# ***PRESSURE PILOT***

## INSTRUCTION MANUAL



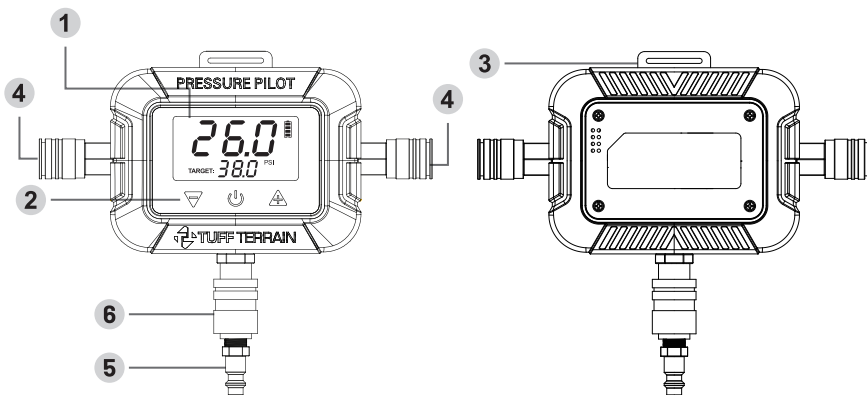
**SKU: TT-PP**



## WARNING

1. Carefully read through this entire instruction manual thoroughly before attempting to operate this product. Keep these instructions for future reference. Failure to do so could result in injury.
2. Burn Hazard: The Air Controller can become very hot during use. Use extreme caution when touching and keep away from children. Allow adequate time to cool before handling and stowing away.
3. Do not disassemble. Do not attempt to repair or make modifications to the air controller.
4. This is not a toy. Never allow children to operate or play with the air controller. Supervise children when around the air controller.
5. Do not use any tools or attachments that were not included with the air controller.
6. Never point an air nozzle or sprayer at any part of the body.
7. Always inflate tires to the manufacturer's recommended tire pressure.

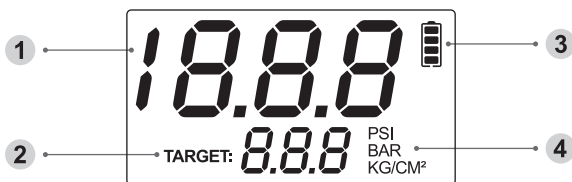
## FEATURES



1. Digital LCD Screen
2. Power Button
3. Back Hook

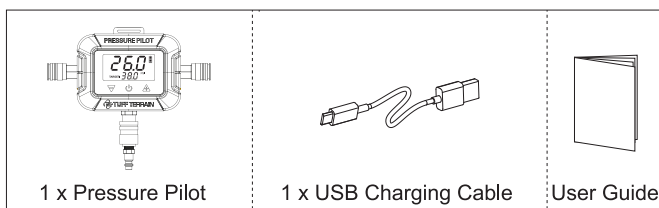
4. Quick Disconnect Couplers
5. Air Source Coupler
6. Slider Air-Valve

## DISPLAY PANEL



- |                     |                    |
|---------------------|--------------------|
| 1. Current Pressure | 3. State of Charge |
| 2. Target Pressure  | 4. Pressure Unit   |

## PACKAGE CONTENTS



## OPERATION

To Inflate:

1. Connect the controller to an air source (e.g., air compressor, air tank).
2. Connect the controller to the tires through the air hose (either a single tire or all four tires).
3. Press the power button to turn it on, and set the desired PSI by pressing the “-” or “+” buttons.
4. Turn on the slider Air-valve (↑OPEN) and air source to start inflation. The process will pause 2–4 times for pressure calibration.
5. When the desired pressure is reached, the controller will close the internal electronic valve and beep.
6. Turn off the air source.
7. Disconnect the hoses from the tires.
8. Disconnect the air source and turn off the controller.



**Note: The electronic valve will remain closed for 120 seconds, during which it will beep. Disconnect the hoses and air source within this time.**

**Tip: Inflating higher pressure for rear tires than front**

1. Connect all four tire hoses, and set the PSI for the front tires.
  2. Inflate all four tires to the PSI set for the front tires.
  3. Once the front tire pressure is reached, disconnect the front tires and press "+" to adjust the PSI for the rear tires. The controller will resume inflation to the new PSI for the rear tires.
- 

**To Deflate:**

1. Connect the controller to the tires using the air hose (without connecting an air source).
2. Press the power button to turn it on, and set the desired PSI by pressing the "-" or "+" buttons.
3. Turn on the slider Air-valve (↑OPEN), and the controller will automatically start deflation. It will pause a few times for pressure calibration.
4. When the desired pressure is reached, the controller will close the internal electronic valve, screen flashes and beep.
5. Close the manual valve and disconnect the hoses from the tires.



**Note: The electronic valve will remain closed for 120 seconds, during which it will beep. Disconnect the hoses within this time.**

**Tip: Further Deflation**

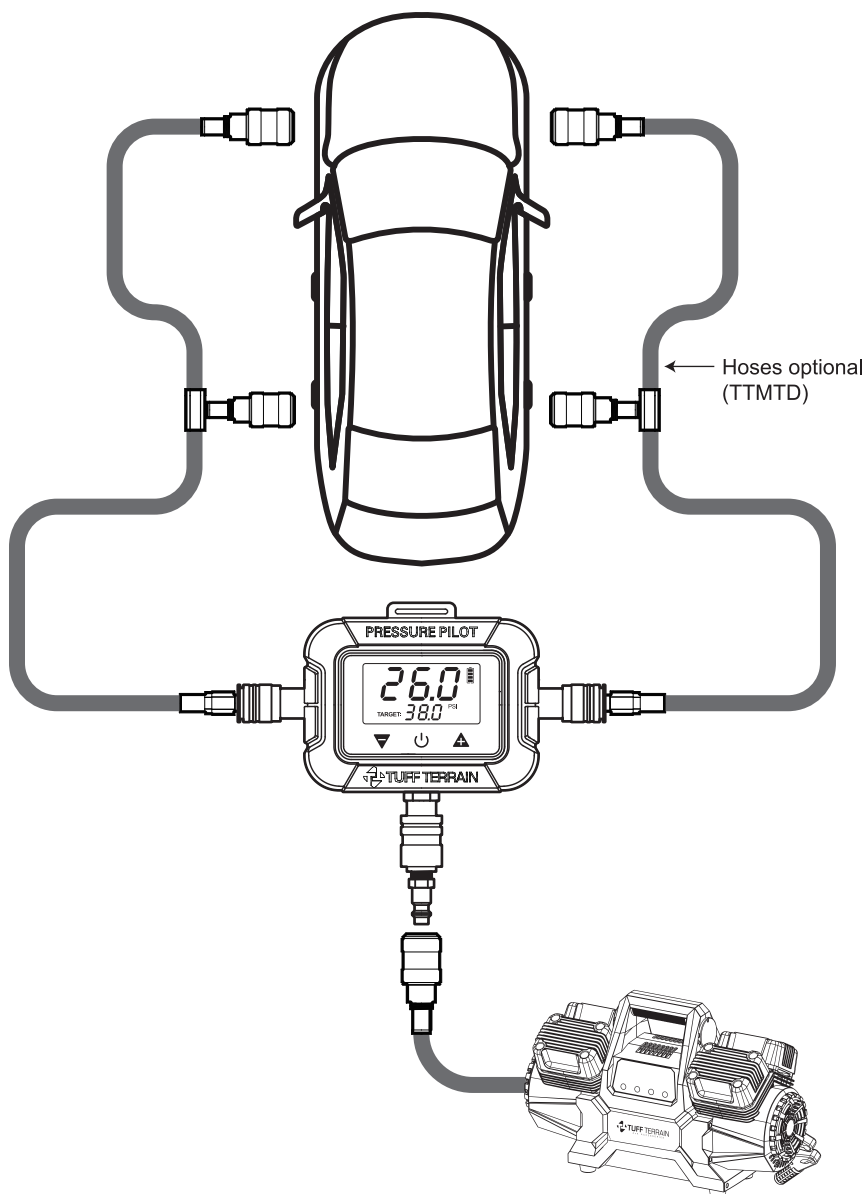
To deflate further, with the hoses connected and the manual valve open, press "-" to lower the PSI. The controller will automatically continue deflation until the new pressure is reached.

---

**To Charge the Air Controller:**

1. When the air controller is out of power, use the USB-C cable provided to charge it. Connect the cable to the air controller, then connect the other end to a USB charger or port. You will know the air controller is charged when the charging signal on the screen is flashing.
2. After the air controller is fully charged, the charging signal stops flashing and stays solid.

## TYPICAL SETUP



## SPECIFICATION

Model Number	TT-PP
Internal Battery Voltage	14.8V
Internal Battery Capacity	1000mAh
Internal Battery Type	Lico Battery
Recharge	USB-C Power Supply
Working Cycle	20 Cycles of Inflation/Deflation
Accuracy	±2 PSI
Max. Pressure	150 PSI
Units of Measure	PSI, BAR, KPA, Kg/cm <sup>2</sup>

**Outback Equipment (AUST) Pty Ltd**  
1 Murdoch Circuit, Acacia Ridge QLD 4110  
TEL: 1800 854 185