

Fitting Instructions



SKU

PRODUCT

T7Z737

**TAG Rear Step to suit Toyota
Hiace / Commuter (02/2019 - on)**



Scan for latest
version of these
instructions

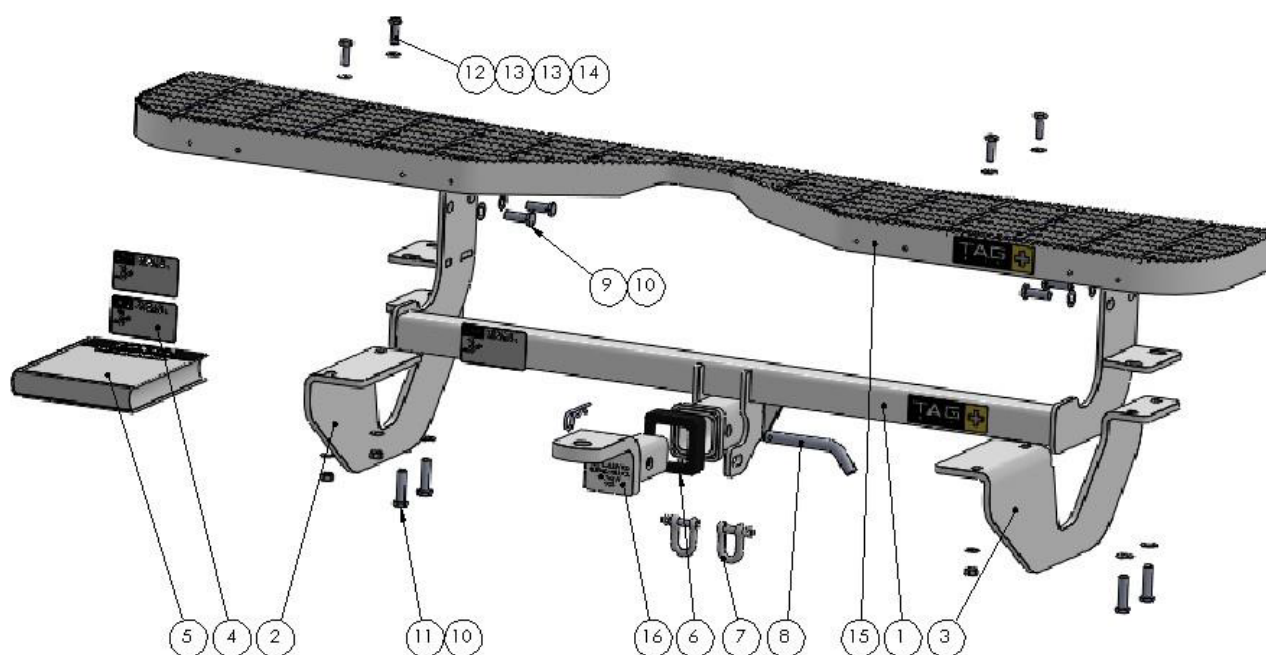
SPECIFICATIONS

- Towbar Class: Heavy Duty
- Towing Capacity: 1900kg

IN THIS GUIDE

- Fitment Instructions
- Torque Settings
- Warranty Info

Towbar Fitting Instructions



Tools Required: Spanners/Socket, Torque Wrench, Air saw or similar, Trim removal tools

ITEM	DESCRIPTION	QTY.	ITEM	DESCRIPTION	QTY.
1	Welded Assembly for T7T709	1	9	M12x1.25x35 Bolt	4
2	Rear Step Bracket PS	1	10	M12 Flat Washer Zinc Clear	8
3	Rear Step Bracket DS	1	11	M12x1.25x45 Bolt	4
4	TAG Compliance plate	3	12	M10x1.25x30 Bolt	4
5	Fitting Instruction	1	13	M10 FLAT WASHER	8
6	Cover Hitch Receiver Collar TAG	1	14	M10x1.25 Nut	4
7	TAG D-Shackle - 10mm, 1000kg,	2	15	TAG Rear Step (w/ towbar relief)	1
8	Class 4 Pin & Clip	1	16	L4120 Ball Mount	1

Step-By-Step Instructions

Warning:

- This product is for towing purposes only and must only be loaded as shown in your vehicle Owner's Manual.
- This towbar is NOT to be drilled, cut, welded, or modified in any way.
- Check behind chassis rail and body panels before drilling to ensure no hazards are present
- All load ratings shown are under the assumption your trailer has a functional braking system installed
- When installed in positions other than the one depicted in these instructions the Tow Ball Mount may interfere or obstruct certain features of your vehicle (tailgate opening, Chassis clearance, etc.)

General:

- Before fitting this towbar read fitting instructions and check installation hardware is correct.
- Check that the towbar is suitable for the vehicle and be wary of any changes to the vehicle design that may conflict with the fitting of this towbar. (Tray, Canopy, Suspension etc.)
- After drilling, blow any filings clear, remove any swarf and treat exposed metal with a rust inhibitor.
- The high tensile fasteners supplied with this product are an integral feature to achieving the specified rating, if replacement is required ensure that fasteners of the same grade (8.8) & quality are used. Contact an authorised TAG distributor or the TAG fitment centre - (07) 3208 3022 - if further information is required.

Towbar Maintenance and Care:

It is recommended, when not in use, the Tow Ball Mount assembly and class 4 Pin and Clip is stored inside the car away from moisture to prevent standing water from forming rust. Inspect to ensure, on regular basis, fasteners are torqued to the specifications below and in good condition.

Ensure that the fitting instructions are read and understood prior to fitment

Place these instructions in the vehicle's glovebox after installation is completed

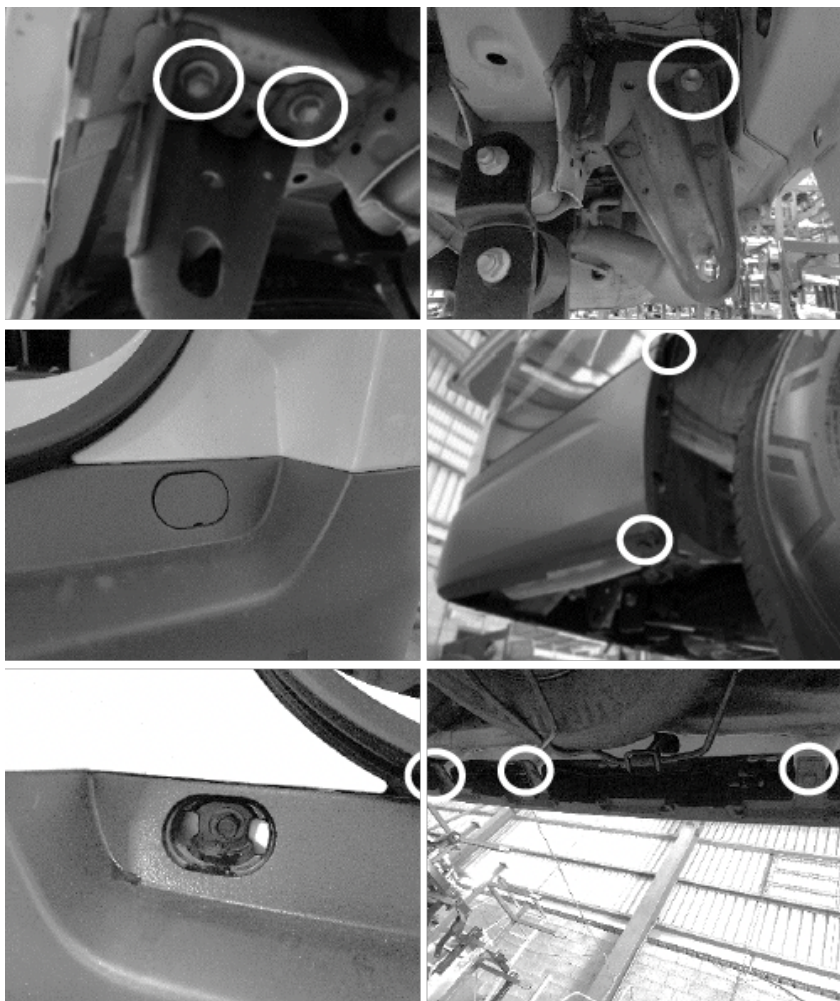
Towbar Fitting Instructions



Step 1. Remove Rear Bumper & Tow Hooks

Note to installer: Fitting of this step will inhibit the correct function of the reverse sensors. It is recommended that suitable brackets be used to relocate the OEM reverse sensors onto the step & wiring extended.

- a. Remove & discard the tow hooks and bolts from chassis rails.
- b. Disconnect the wiring loom.
- c. Remove plastic clips securing the rear bumper around the bottom edge and inside the wheel arches.
- d. Open tail gate and remove plastic covers to expose screws & remove.
- e. Beginning at the wheel arch, carefully pry the bumper away from the vehicle and remove.
- f. Place bumper and all fasteners aside.



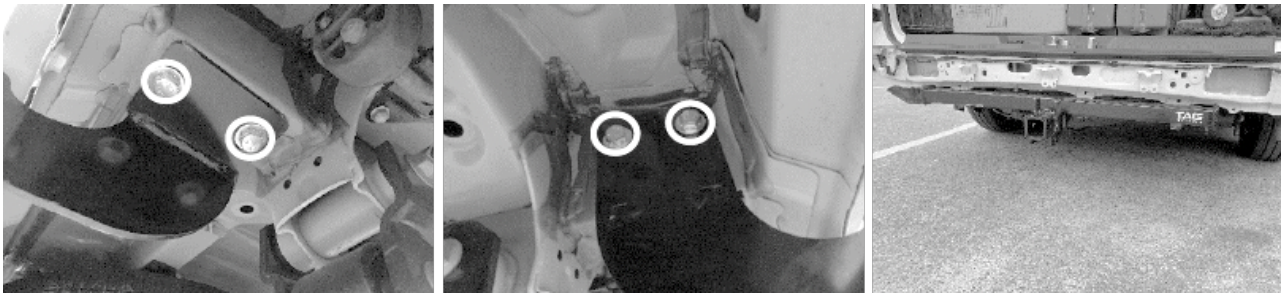
Towbar Fitting Instructions



Step 2. Fit Towbar

- Lift towbar to rear of vehicle and loosely secure using 2x M12 bolts with washers per side into the holes on the inside of each chassis.

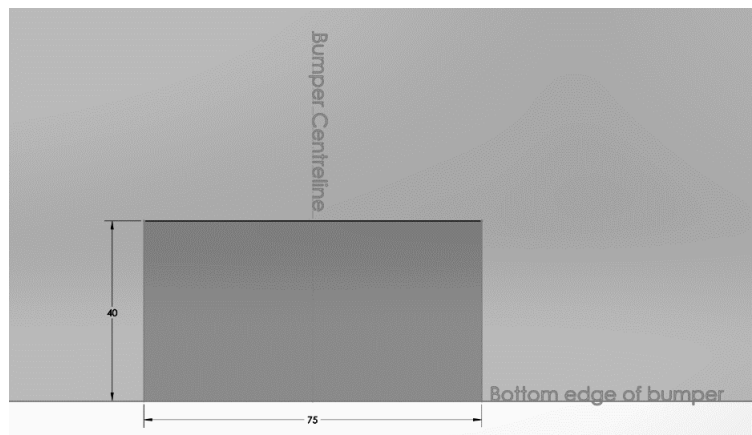
Tools: Spanners/Sockets, Torque Wrench
M12 = 100Nm



Step 3. Cut & Refit Bumper

- Locate the centre of the bumper along the bottom edge create bumper cut as shown in the diagram.
- Refit the bumper using fasteners removed in step 1. Ensure to reconnect any wiring.

Tools: Air saw or similar



Step 4. Fit Step Brackets & Step

- Mount step brackets to underside of towbar chassis plates & fasten loosely with M12 bolts & washers.
- Mount step to step brackets & insert M10 bolts & washers. Loosely secure with M10 nuts & washers.
- Align step to vehicle & tighten all towbar bolts followed by M10 step bolts.

Tools: Spanners/Sockets, Torque Wrench
M12 = 100Nm.

Towbar Fitting Instructions



Step 5. Apply Compliance Label

- a. Apply Towbar compliance label to the inside of the driver's side door pillar. Leave the fitting instructions & remaining compliance label in the vehicle handbook.



TAG Warranty Statement

SWD warrants your TAG Towbar for its full product life under the following conditions:

- You can show proof of purchase.
- The towbar has been correctly installed by a suitably qualified installer.
- The towbar has not been modified or abused in any way and has only been used for the purpose intended.
- The towbar was not fitted second hand to your vehicle.

The extent of this warranty includes materials and workmanship used in the manufacture of the towbar and is to the equivalent value of current, full replacement cost.

Nothing stated or implied in this warranty limits in any way, the statutory rights that you may have.

To make a claim visit the original installer in the first instance or, if you are unable to or are not satisfied with their help, then contact us direct by phone on 1300 669122 or visit www.swd.com.au

Fitting Instructions



SKU

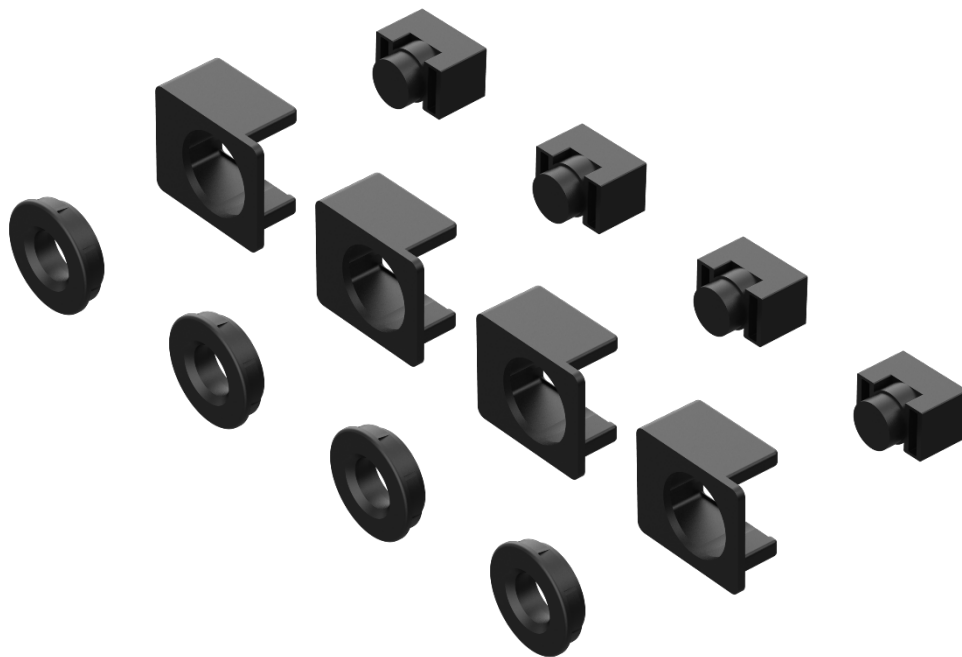
RSM023

PRODUCT

Reverse Sensor Mounting Kit

SPECIFICATIONS

- Approx. Fitment Time: 45 Minutes
- Suits: Toyota HiAce (02/2019 – on)



TOOLS REQUIRED

- Glue

IN THIS GUIDE

- Fitment Instructions

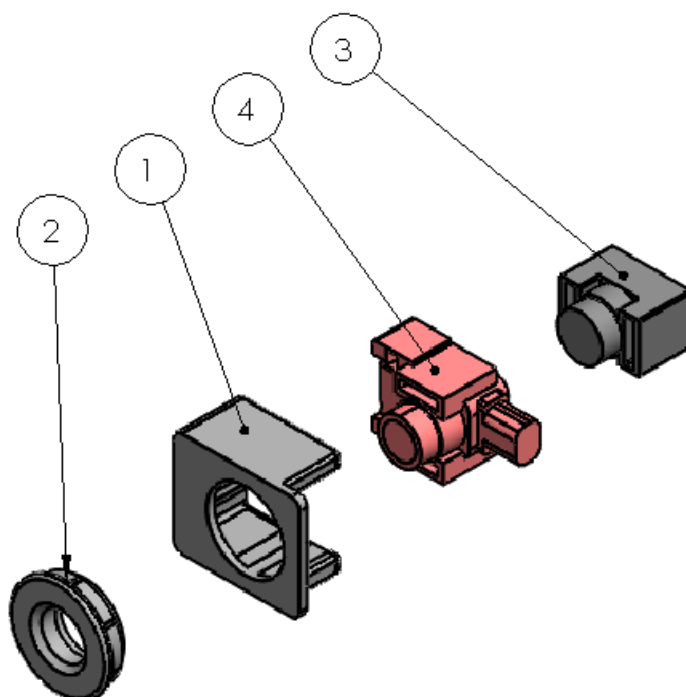
Important Information



Warning:

- This kit is designed to relocate the RPA (Reverse Park Assist) sensors from the vehicle bumper bar to the TAG galvanized step (TRS002 or TRS001).
- It is recommended that the sensor(s) be mounted to the TAG step in the exact orientation they were mounted in the OEM bumper.
- The installation of this kit may require the OEM sensor harness to be elongated to reach the new sensor location. Should the harness(s) need elongation it is suggested that new connections be made by stripping the wires attaching the extension wires by solder.
- The bumper plugs provided are to fill the hole in the OEM bumper where the sensor was removed.
- Contact an authorised TAG distributor or the TAG fitment center - (07) 3208 3022 - if further information is required.

ITEM NO.	DESCRIPTION	QTY.
1	Sensor Housing	4
2	Sensor Collar	4
3	Bumper Blanking Plug	4
4	Reverse Sensor (Not included)	



Reverse Sensor Mount Instruction.

1. Insert sensor into housing and push in until you hear an audible click.
2. Align the sensor housing & collar with hole of TAG step.
3. Hold the sensor housing against the inner face of the step and firmly push the sensor collar together with an audible click. **Note: A dab of glue may be required to permanently fix the two components together.**
4. If possible, route the sensor harness on the adjacent cable rail and tie off with cable ties.

