



4WD INTERIORS

INSTALLATION OF ROOF CONSOLE



MAZDA BT-50/FORD RANGER PX DUAL CAB 2012 on

PART NO. RCMA12
PART NO. RCPXMK2
PART NO. RCPXMK3

NOTICE: A cut-out into the roof lining will need to be made to mount this console, thereby making installation a permanent fixture.

Removing Light Pod assembly will also remove the Perimeter alarm sensor fitted. Perimeter alarm can be detached from light pod assembly and re-fitted to console. See Perimeter Sensor fitting supplement if you wish to transfer to console.

Failure to connect coloured wiring correctly and to tape up all connections as described in following instructions may result in an electrical short and will void console warranty.

For this installation, you will need an electric or battery drill, 3.2mm drill bit, one stumpy and one long thin Phillips screwdriver, sharp thin bladed craft knife or similar, marking pen or pencil, Loctite or similar thread lock and electrical insulation tape. Loctite all console screws when installing. All mounting brackets and hardware supplied in fit kit.

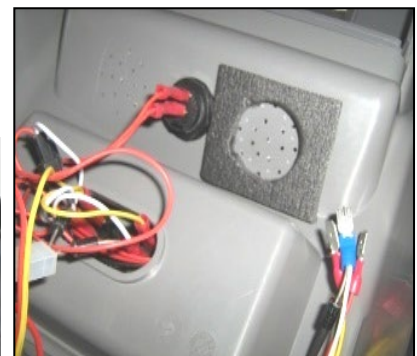
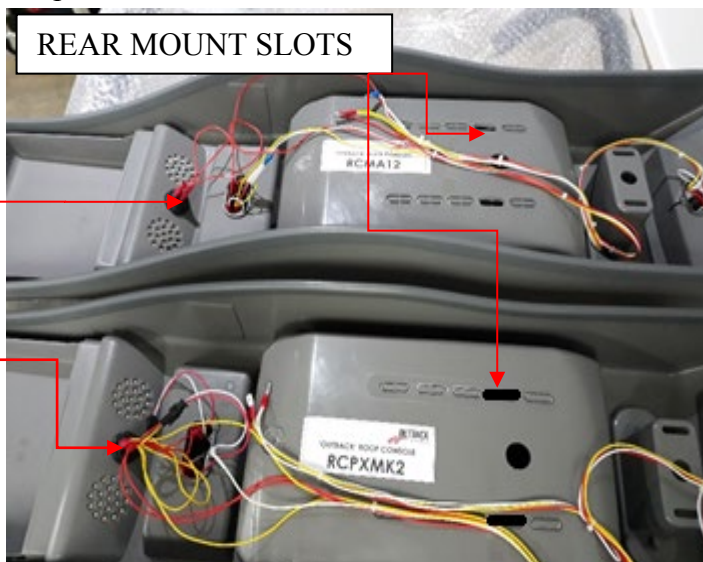
Vehicle Preparation:

Unclip front interior light assembly from the larger Pod Surround with thin bladed screwdriver or similar placed in the centre on the front edge, and gently prise from Pod. Unplug all wires. Remove two screws that hold light pod surround to roof rib, and gently prise from roof lining, working from rear view mirror back. Set aside with light assembly as they are no longer required.

***NOTE:** the following procedure is not required on vehicles with the Bluetooth microphone pick-up mounted into roof lining.

Gently prise out Bluetooth Speaker from Pod assembly and place in position over R/H speaker Grille inside console and fix into circular sticky foam tape supplied. Clean surface of console with white spirits or similar before sticking down foam circle.

Point wire connector from Bluetooth Speaker upwards towards Bluetooth connector on wiring loom. Stick down other foam tape supplied firmly over speaker to hold in place.



Front Mount Bracket installation:

Fasten Front Mount Bracket supplied to light pod mounting holes using two (2) 10g x 20 Phillips screws supplied. Add a drop of Loctite to both threads.

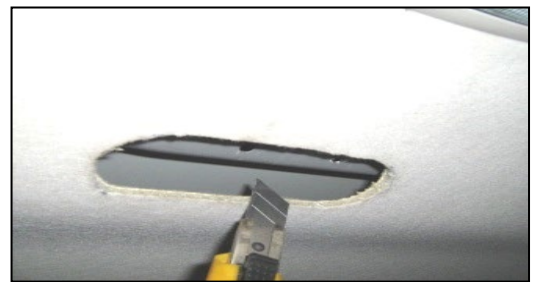


Rear Mount Bracket installation:

To install Mount Bracket to roof rib, hold console marking template against Front Mount Bracket with slot **580mm** rearward of Front Mount Bracket. Centre template in middle of vehicle, clamp template to Front Mount bracket, mark through slot in template onto roof lining.



Use sharp craft knife and neatly cut out roof lining to expose roof rib.



Hold Rear Mount Bracket in place against roof rib. Align centre hole in bracket with small hole in roof rib. Push scriber or similar through the two captive nuts and place marks onto roof rib. Remove bracket. Using a short "stubby" **3.2mm** drill bit and **with only 20mm of drill bit protruding from drill chuck**, drill two 3.2mm holes into roof rib. Mount rear bracket to roof rib using **two (2) 10g x 20** screws supplied, using a thin Phillips head screw driver inserted through the captive nuts to tighten. Add a drop of Loctite to both threads.



NOTE: Switch centre interior light to **OFF** position. Console will cover interior light and will no longer be needed.

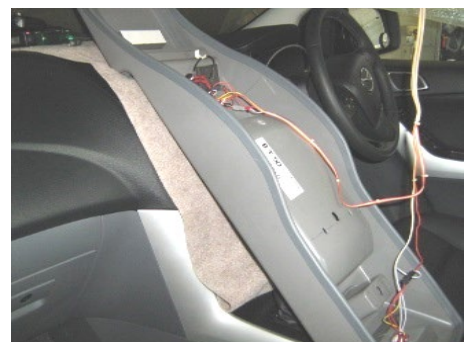
Comfortable work position;

Shift front seats all way back. Lay front seats back. If left-handed sit in right hand front seat. If right-handed sit in left hand front seat. A second person will aid to your installation.

Installation preparation:

Cover vehicle floor console and dashboard with protective sheet and stand console upright against dash.

Plug console wiring loom into **front interior wiring of vehicle.**



All Early Models: Plug **Red** wire on console into individual **Yellow wire** of interior light plug. Plug **White** wire on console into **White/red wire** of interior light plug, and **Yellow** wire on console into **Black wire** of interior light plug.

***PX Mk 2 Models:** Plug **Red** wire on console to **Yellow/green** individual interior light plug, **Yellow wire** into **Blue/black** interior light plug, and **White** wire into **White/red** interior light plug.

***PX Mk 3 models:** Plug **Red** wire on console to **Yellow/green** interior light plug, **White** wire into **White/Black** interior light plug, and **Yellow wire** into **Blue** individual interior light plug.

BT50 Model Upgrade only: Plug **Red** wire on console to **Yellow/Purple** individual interior light plug, **Yellow** wire into **Black**, and **White** wire into **White/brown** interior light plug.

Check the console lights work independently once doors are shut and timer switches off, then **tape up to ensure wires do not become disconnected.**

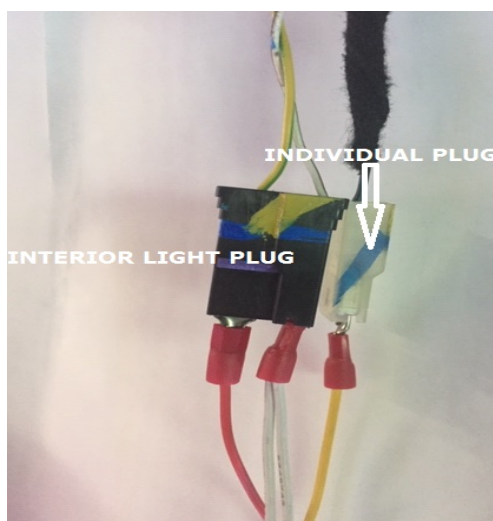
There is an 'ON/OFF' switch located above the radio opening. When 'OFF' it acts as a "kill" switch-- **no lights will work.** When 'ON', LED lights work independently on their own switch as map/interior lights when doors are shut and door timer has switched itself off. When doors are opened, all lights will operate as door/interior lights.

Console installation:

Hold console up in position against roof and loosely screw through two (2) holes on front of console into front mount bracket using 6 x 16mm black headed screws. Use two (2) 6mm x 30mm round head Phillips bolt and flat washers and fasten into threaded insert in Rear Mount Bracket **from within the locker box.** Now tighten all round head bolts, starting from the front.

NOTE: only tighten rear bolts up so **console fits snug to curvature of roof lining.** Connect Bluetooth speaker wire to vehicle loom connector via the radio hole opening.

Remove Microphone cable holder and rear mount cover panel from inside Locker Box. Fasten rear cover panel in place using screws provided. Fasten Microphone cable holder to side of console as per radio installation instructions.



RCMA12 FIT KIT

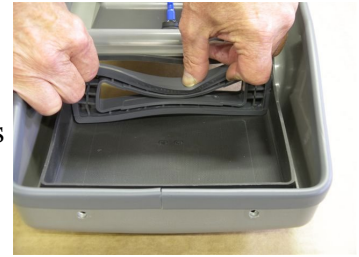
- One (1) Front Mount Bracket
- One (1) Rear Mount Bracket
- One (1) Marking Template
- One (1) Piece sticky back foam with hole (Bluetooth speaker mount base)
- One (1) Piece sticky back foam with slot. (Bluetooth speaker top)
- Two (2) 6mm x 25mm round Phillips head bolts
- Two (2) 6mm large washers
- Two (2) 6mm x 16mm black round Phillips head bolts
- Four (4) 10# x 20mm Phillips head self-tapper screws
- Three (3) x 100mm Sticky back foam pieces (CB mount)

RADIO INSTALLATION

Radio Insert Installation for smaller size radios

Decorative side of insert faces outwards and snaps out over bottom of tray surround.

To install insert, squeeze top and bottom together; push/bend sides and squeeze into tray surround from inside to outside until bottom lip on decorative side of insert snaps/pops out over bottom of tray surround, prise with fingers to ensure bottom lip of insert is in place over radio tray surround as described. **Do not** scratch or mark insert or surround by prising/levering with tools; use hands/fingers only.



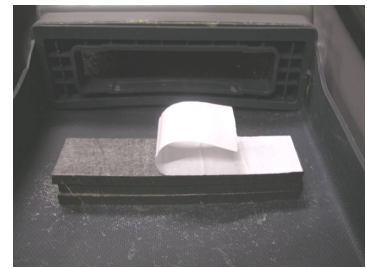
Radio Installation:

Place protective cover on work bench to avoid scratching console. Place console on protective cover and using a sharp knife cut a 30mm x 100mm section out of radio tray 25mm in from where rear of radio will be when installed. Use a small amount of methylated spirits on a clean cloth to clean exposed part of console and bottom rear of radio.



Peel one side of protective backing from foam strip supplied; apply pressure with palm of hand to adhere foam to exposed part of console body. (Sticky back foam will not adhere to radio tray)

Peel backing off other side of foam strip and add one or more strips of foam to suit different size radios (**see chart below**). This will keep radio level with bottom of insert/surround. Peel off top foam strip to adhere to radio body.



Mount Roof console as per vehicle specific instructions. Lay radio aerial cable and power wires out through radio tray/Insert opening. Connect radio cables and push radio in on an angle through insert until radio face protrudes approx. 15mm out over bottom of tray surround or insert. Use both thumbs to apply upwards pressure on radio, this will adhere radio body to sticky back foam.

TIP: smear a light kitchen oil around insert opening to help radio slide in.



Sticky back foam chart:

One (1) strip- standard DIN size radios

Two (2) strips- Icom and Uniden

Three (3) strips- GME Electraphone



Microphone handpiece and Microphone Cable Holder installation:

Install in a position that suits best, depending on vehicle and Radio model. Ensure microphone **or** microphone cable and holder does not foul on sun visor when pulled down.



Microphone clip on slight angle



Left hand cable outlet radios



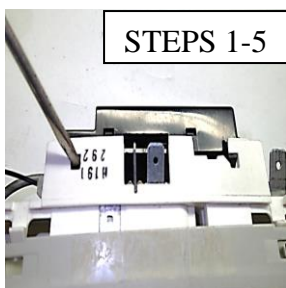
Microphone clip on acute angle



FORD RANGER PX 2012 on PERIMETER ALARM FITMENT TO CONSOLE

For transfer of Perimeter Sensor from Light Pod to Outback Roof Console, you will need the following items: small thin blade screwdriver, marking pen, electric or battery drill, 3mm and 10mm drill bit, 100mm length of sticky backed Velcro tape and a small tube of Cyanoacrylate super-glue.

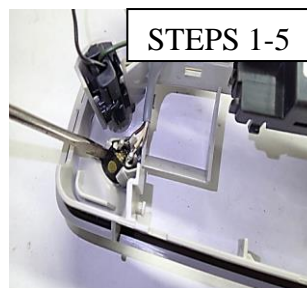
1. Use a small blade screwdriver to push the upper 4 tabs inwards to separate black sensor pack from the light Pod assembly.
2. Push the lower 4 tabs inwards to separate the lower assembly from frame, and to gain access to captive sensors.
3. Slide sensor pick-up wires out from plastic clasps situated each side of lower assembly.
4. Lift out thin wire running across lower assembly.
5. Using thin screwdriver, gently put pressure on one pick-up sensor tab while carefully pulling on wire to remove from frame. Remove other sensor from frame. Sensor Pack is now freed from assembly.
6. Clean inside front area of console radio opening with white spirits or similar for Velcro and super-glue to adhere to.
7. Place ++ sticky back Velcro above radio opening, and the -- sticky back Velcro to Sensor Pack.
8. Mark a straight line on side edge of console LED light housing towards radio opening, and drill a 3mm pilot hole, followed by 10mm hole in the centre flat area, on each side. Drill holes through console from inside. De-burr all drilled holes.
9. Press Sensor Pack onto Velcro with wires from Pack facing towards LED lights and harness plug opening facing down. Poke the two sensor pick-ups into 10mm holes. Have approx. 1-2mm of sensor protruding out from console body, then run a bead of super-glue on the inside of console around sensor pick-up. Allow glue to set hard before console installation.
10. While holding console up next to front mount bracket when installing, re-connect vehicle green connector plug into sensor pack along with Bluetooth Mic pick-up plug into vehicle loom. Perimeter sensor will now function as intended.



STEPS 1-5



STEPS 1-5



STEPS 1-5



STEPS 1-5



STEPS 1-5



STEPS 6-9



STEPS 6-9



STEPS 6-9



STEPS 6-9



STEPS 6-9



STEPS 6-9



10