

Assembly and Fitting Instructions

Part number DSG046

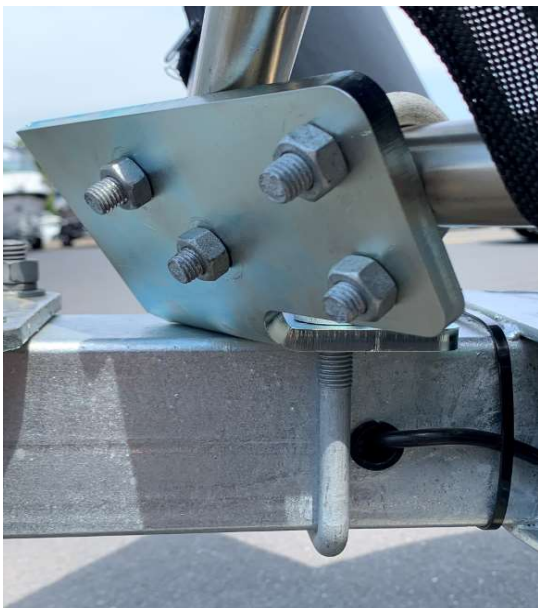
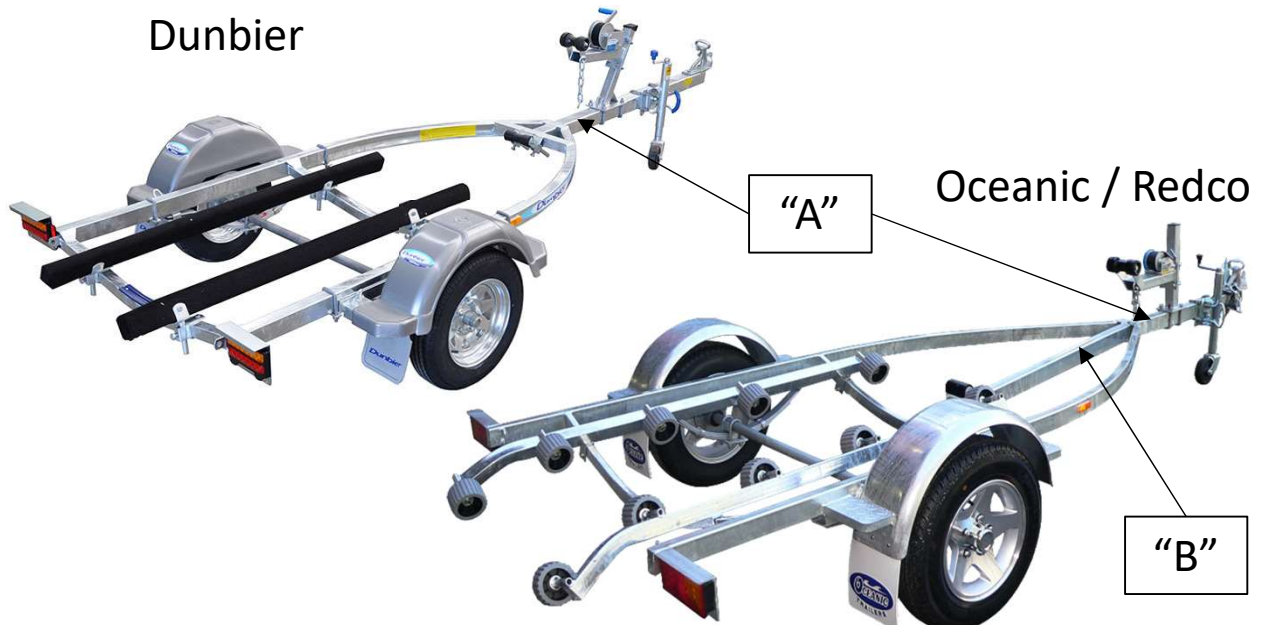
Updated –DEC 2019

1/ Please fully read instructions before commencing assembly

2/ Installation should only be performed by a suitably skilled person.

Step 1 – Fit draw bar mounting bracket

Depending on the style of your jet ski trailer it is possible to mount the stone guard in either position “A” or position “B” as shown below.



1/ Place mounting bracket on trailer.

2/ Secure to trailer with correct length U Bolt.

Warning:- Ensure any cables running along or under the chassis are not interred with

Step 2 – Fit tubular frames



Secure the tubular frames to the rear of the mounting bracket using the small “U-bolts” and fasten.

Step 3 – Fit covers



Slide the covers over the tubular frame from the side and secure with zippers running along the inside edge.

PERIODICALLY CHECK TO ENSURE THAT ALL FASTENERS ARE TIGHT AND THAT ALL STRUCTUAL COMPONENTS ARE SOUND.

JGC Components Pty Ltd, warrants this product to be free of defects in material and/or workmanship at the time of retail purchase by the original purchaser. If the product is found to be defective, JGC Components Pty Ltd, may repair or replace the product, at their opinion, when the product is returned, prepaid, with proof of purchase. Alteration to, misuse of, or improper installation of this product voids the warranty. JGC Components Pty Ltd's liability is limited to repair or replacement of products found to be defective, and specifically excludes liability for incidental or consequential loss or damage.