

# SEMI FLEXI SOLAR PANEL

BSMARTFLEXI

Flexi Solar panels utilise the highest efficiency SUNPOWER solar cell technology so that even in cloudy conditions the output is higher than lower quality solar panels in the market. The slimline aerodynamic design replaces heavy and bulky glass panels, the flexi panel range is perfect for caravans, boats and 4WD installs.

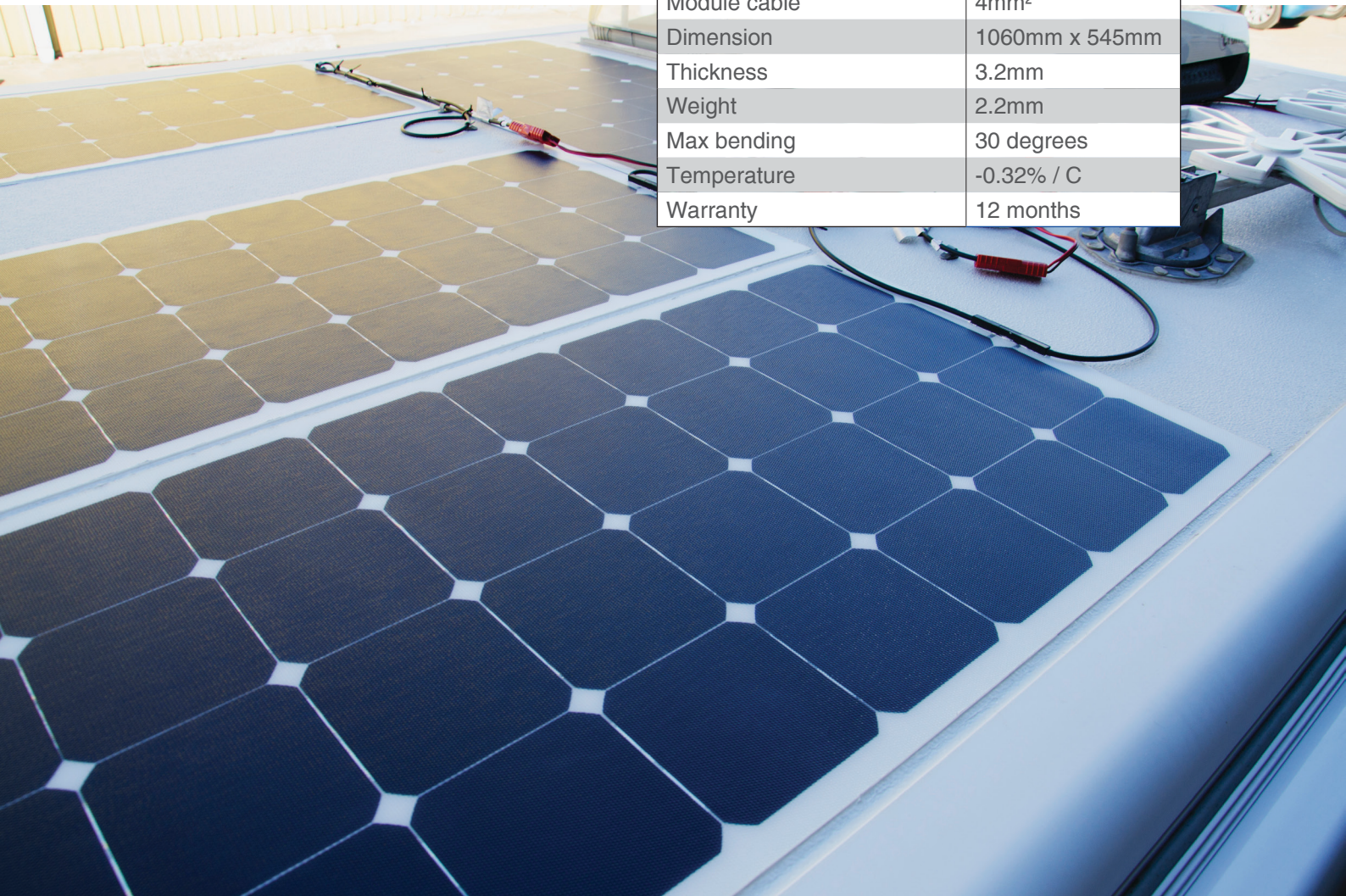
## Features and benefits:

- High efficiency SUNPOWER cell technology
- Light weight
- Water proof
- Flexible
- ETFE surface material: UV resistance, guaranteed performance in outdoor application with 20 years life span
- No sharp edges
- Slimline

## Find out more:

[www.baintech.com.au/flexi](http://www.baintech.com.au/flexi)

Model	BSMARTFLEXI
Power	100W
Voltage at max power	17.9 VDC
Open circuit voltage	21.4 VDC
Current at max power	5.7A
Short circuit current	6.1A
Cell type	SUNPOWER
Cell efficiency	20%
Module efficiency	>18%
Operating temperature	-40°C - 80°C
Surface material	ETFE
Junction box	IP65
Connector	SP4
Module cable	4mm <sup>2</sup>
Dimension	1060mm x 545mm
Thickness	3.2mm
Weight	2.2mm
Max bending	30 degrees
Temperature	-0.32% / C
Warranty	12 months



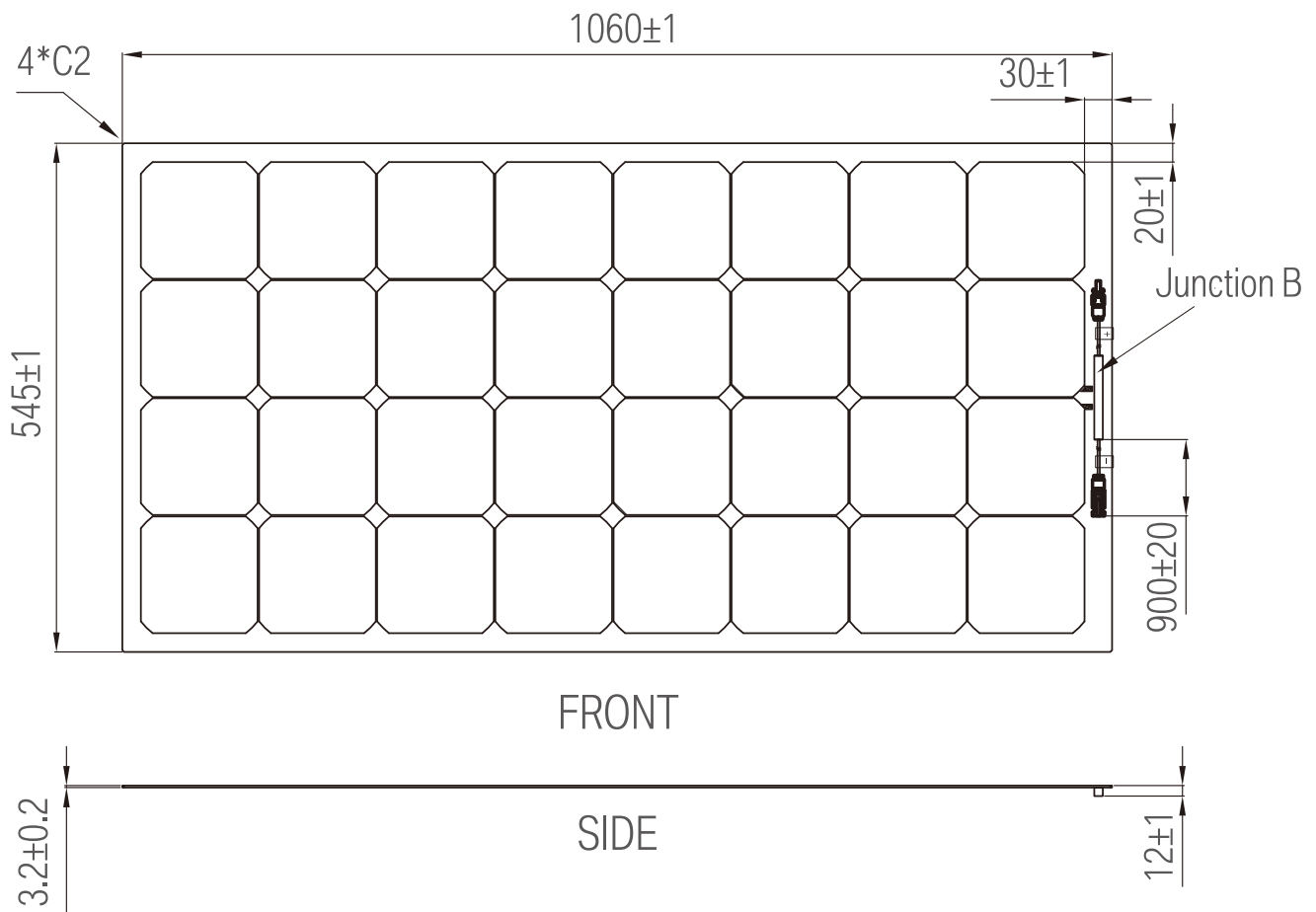
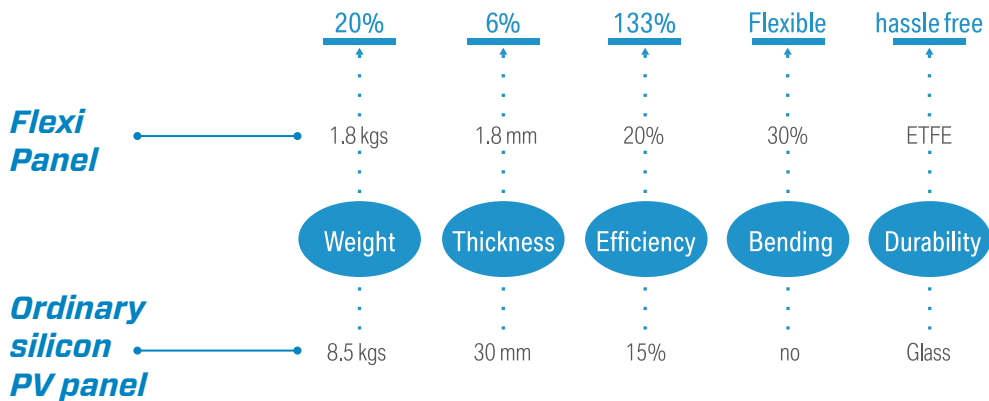
Phone: 1300 224 683 email: [sales@baintech.com.au](mailto:sales@baintech.com.au)  
[www.baintech.com.au](http://www.baintech.com.au)



# SEMI FLEXI SOLAR PANEL

BSMARTFLEXI

## Flexible Panels VS. Regular Glass Panels



- Flexi Solar panels have two DC Cables each end of a termination bar
- One is positive and one is negative
- Use a voltmeter to determine the connector polarity
- The cables are fitted with standard MC4 connectors

Normally these MC4 connectors clip into a mating MC4 connector which is fitted to the solar cable running back into the system equipment.



Phone: 1300 224 683 email: sales@baintech.com.au  
www.baintech.com.au

