

# orbit<sup>®</sup> AIR COMET 325

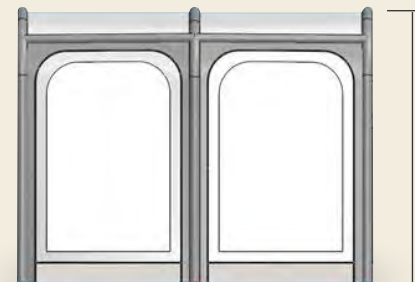
## HIGH 325 WIDTH RANGE



9 347296 000071

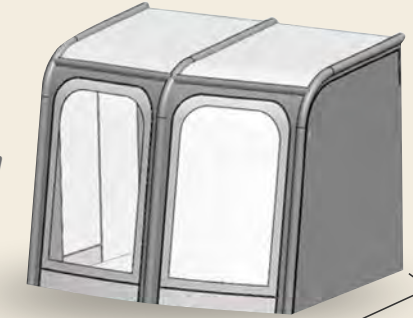
OAC325H

Orbit Air Comet 325 High



W = 325cm

HIGH  
H = 275cm

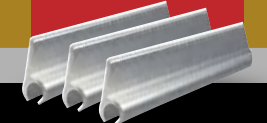


D = 240cm

**INFLATABLE CARAVAN ANNEXE**

**325W x 240D x 275H**

**FREE SAIL  
TRACK INCLUDED**



[orbitairtech.com.au](http://orbitairtech.com.au)

*DEVELOPED SPECIFICALLY FOR THE AUSTRALIAN CLIMATE*  
From the Makers of the Multi-Award Winning AirOPUS<sup>®</sup> Camper Trailer

**purpleline<sup>®</sup>**  
design...innovate...improve

### ANNEXE BAG CONTENTS

• Inflatable Annexe	• Steel Pegs
• Wind Skirt	• Repair Kit
• Hand Pump	• Ladder Bands
• Ground Sheet	• Support Poles
• Storm Straps	• Sail Track

### FEATURES

- Plastic LED Sleeve for optional LED light strip
- Pre-attached storm buckles & webbing straps
- Removable side door panels
- 3-layered window system (mesh, plastic & canvas)
- Dirt skirt for extra protection
- Superior ventilation

### PITCHING INSTRUCTIONS

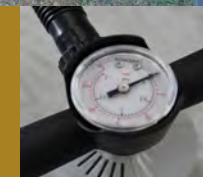


#### PLEASE READ THESE INSTRUCTIONS BEFORE ATTEMPTING TO PITCH YOUR ANNEXE

1. Ensure that the ground is free of stones and other sharp objects. You may wish to lay a sheet of polyethylene on the ground to protect your annexe. Unpack and spread the annexe on the ground.
2. Thread the annexe's beading through the sail track on the caravan to the desired position. The annexe should be positioned on the caravan so the beading is horizontal. The beading should not slope.
3. Locate your annexe anchor clips which are sewn into the bottom of the flysheet.
4. Attach the supplied ladder bands onto all the anchor clips by simply pushing the ladder band into the anchor clip. To avoid damage to your annexe, use all pegging points. The ladder bands are replaceable.
5. Next locate the inflation valve which is near ground level on the main air beam. The valve is attached by a retaining strap and is not pre-fitted therefore you will need to carefully screw this into place. Remove the main valve cap and insert the Orbit<sup>®</sup> Air Pump's inflation nozzle and operate the pump accordingly. It may be necessary to elevate the tube during the latter stage of inflation. **Inflate to a maximum of 7 psi and then screw the valve's cap into position.**
6. Close all zip entrances on the annexe flysheet and peg out the storm straps.



**INFLATE AIR BEAMS TO A MAXIMUM OF 7 PSI**



7. Next peg the annexe starting with the rear corners (nearest the caravan) ensuring that you pull the pegging point under the van to create a seal whilst ensuring the sidewall is as vertical as possible.

Then peg the front corners, ensuring that there is no slack material between the four corners. Peg the remaining pegging points, cross pegging the doorways and entrances. Adjust storm straps as necessary.

## INFLATABLE CARAVAN ANNEXE

### PITCHING INSTRUCTIONS CONTINUED



- Your annex is supplied with two adjustable rear support poles. Ensure the rear weather seal pads are located between your caravan's wall and the rear support poles. The poles should be inserted with the bottom part through the retaining loop located at the base of the rear seal pads and with the flat end inserted into the integral pocket in the top back end of annex above the rear seal pads. Adjust these poles as necessary to obtain the correct tension using the adjustable quick lock bracket.
- Ensure the weather skirt is laid and pegged correctly to help stop any water entering the annex. The weather skirt has a dual pegging system so the skirt can be pegged inside or outside the annex.
- Located in the central air beam is an integral sewn-in vertical storm pole pocket which can be used in conjunction with a rear support pole in certain weather conditions to aid stability and any water dispersal. Insert the flat end of the pole with the black plastic protection piece into the integrated storm pole pocket and adjust it to the correct tension (slightly lifting the roof, but taking care not to over adjust) and tighten using the quick lock brake.

**DO NOT USE  
THE PUMP  
TO DEFLATE  
YOUR ANNEXE.  
SIMPLY  
UNSCREW  
THE VALVES  
TO DEFLATE**

### TAKING DOWN YOUR ANNEXE

Taking down your annex should ideally be done when the annex is completely dry. If taken down wet, dry completely at the first opportunity to avoid damage to your annex.

To dismantle your annex, deflate each tube by unscrewing the dust cap and then the valve from the bladder. Un-peg the annex and then release the beading from the caravan sail track channel.

The annex should be folded carefully and packed in a dry safe place. Leave the valves un-fitted whilst being stored.

# orbit® AIR COMET 325 HIGH 325 WIDTH RANGE

## SAIL TRACK INSTALLATION

Installing sail track  
without pop rivets,  
screws or drilling  
into your caravan



- Layout the sail track lengths supplied in your Orbit® Air Annex bag in front of the caravan wall that you will be installing on.
- On the caravan wall, carefully measure and mark a straight line and a starting point for your sail track to follow.
- Once you have worked out your end point cut the excess length of sail track. Clean up the ends of the sail track with a small round file to give a nice clean entry. It is harder to do this after it is fixed to the side of the caravan wall.
- Apply small squares (say 10mm x 10mm) of double sided self adhesive foam tape (1.5mm thick) about every 300mm to the caravan wall along the line where you want the sail track to be positioned. Keep the end patches about 75mm from the ends of the sail track.
- Then apply a bead of Sikaflex 11F between the tape patches for the full length of the sail track.

- Press the sail track onto the tape patches and squeeze the Sikaflex out. The tape will hold the sail track in position until the Sikaflex sets (allow 24 hours minimum before "testing").

**Important: When fixing and aligning the sail track lengths to the caravan wall, make sure there is no gap between the sail track join, so the air annex slides in and out of the sail track channel smoothly. Seal joins with extra Sikaflex to avoid water going through if needed.**

- Clean up any excess Sikaflex immediately with clean rags and turps as excess Sikaflex will hamper the air annex to slide in and out of the sail track smoothly.

- Job done!

[orbitairtech.com.au](http://orbitairtech.com.au)

**DEVELOPED SPECIFICALLY FOR THE AUSTRALIAN CLIMATE**  
From the Makers of the Multi-Award Winning AirOPUS® Camper Trailer

 **purpleline®**  
design...innovate...improve

# orbit<sup>®</sup> AIR COMET 325 HIGH 325 WIDTH RANGE

## CARE INSTRUCTIONS



**WE HIGHLY RECOMMEND INSTALLING A "ANNEXE DOOR PROTECTION ROLLER" TO AVOID TEARING YOUR ORBIT AIR ANNEXE**



This roller must be fitted to the top outer corner of the door to prevent the corner of the door causing damage to your annexe. If the roller is not fitted, the fabric of the annexe can be damaged by the sharp corner of the door when it is opened.



### DRYING YOUR ANNEXE

If you do need to pack away your annexe while it's wet, remove all storm straps first and pack these separately. This will help to avoid any damage to your annexe. When drying your annexe, dry it with the flysheet top side exposed. Failure to do this will result in damage to the waterproof coating on the underside of your flysheet, which may result in colour distortion, waterproof failure and fabric failure.



### CONDENSATION

Annexes containing synthetic material are sometimes affected by condensation. This can normally be cured by ensuring adequate ventilation through making full use of the annexe's ventilation or by leaving doorways slightly unzipped whenever possible. Under certain conditions, all annexes will suffer from internal condensation depending on atmospheric conditions, evening and night time temperatures, and moisture in the air and ground. Condensation can be quite severe, causing a film of water inside the roof and walls which can drip into the annexe and even leave puddles of water. Don't blame the annexe or confuse this with leakage - ventilation is the answer.

## INFLATABLE CARAVAN ANNEXE

### ANNEXE WEATHERING

Your Orbit<sup>®</sup> Air Annexe has been sewn using a special waterproof thread. This special thread swells to seal the needle holes made during the manufacturing process. In order for the thread to become functional it needs to be weathered. The weathering process will require the thread to be wet through several times before becoming totally effective. This area may also be treated with seam sealant.

### UV DEGRADATION

Your annexe is a temporary structure which has a UPF50 protection factor but is itself susceptible to attack from UV. Long term or permanent exposure to UV can weaken the fabric.

### MAIN SEAMS

Your Orbit<sup>®</sup> Air Annexe is manufactured using waterproof fabric and has had most of its main seams hot air taped, during production to help prevent water leakage. However, it is sometimes not possible to fully seal these seams, due to the nature of the materials used, features incorporated or sewing methods utilised, and it may be necessary to apply seam sealant manually. A tube of seam sealant is supplied with your annexe for this purpose.

### REMAINING SEAMS

To maximise the Orbit<sup>®</sup> Air Annexe's weather proofing it will be necessary to treat the remaining seams with the seam sealant provided. Seam sealant should also be used where the tape may be damaged, peeled away or interrupted by tie points, suspension points or other features.



**IMPORTANT:  
YOU NEED  
TO "WEATHER IN"  
YOUR ANNEXE  
PRIOR TO INITIAL  
USE**



[orbitairtech.com.au](http://orbitairtech.com.au)

**DEVELOPED SPECIFICALLY FOR THE AUSTRALIAN CLIMATE**  
From the Makers of the Multi-Award Winning AirOPUS<sup>®</sup> Camper Trailer

 **purpleline<sup>®</sup>**  
design...innovate...improve

# INFLATABLE CARAVAN ANNEXE

## CARE INSTRUCTIONS CONTINUED



### STORM STRAPS

Your annexe is supplied with storm straps that should be attached to the captive clips on the flysheet. Storm straps are intended to help secure your annexe but should not be relied on in extremes of weather.

### ZIPS

Zips should be treated with care. Use two hands when closing and opening and do not step on them during set-up or take-down. Never force a zip. If a zip opening is tight, it is more than likely because the annexe is not pitched correctly.

### ALTERATIONS

Alterations made to the annexe are made at the owner's risk and will invalidate your warranty.

### REPAIRS

Repairs made to the annexe that are not carried out by an authorised Orbit® Air Annexe agent or recommended repairer are done at the owner's risk.

### CLEANING

The inside and outside of your annexe should be cleaned only with fresh clean water and a damp cloth. Under no circumstances use detergents or chemical cleaners as they will damage the fabric and its waterproofing.

### STORING

Annexes **must only be stored when completely dry**. Remove all storm straps if they are not completely dry to avoid any damage being done to your annexe. **A wet or damp annexe can develop mildew or mould very quickly**. Store your annexe and its components in a dry, well ventilated place.



# orbit® AIR COMET 325 HIGH 325 WIDTH RANGE



### CARBON MONOXIDE

Ensure you understand the dangers of carbon monoxide poisoning and take precautions at all times. Remember you can't smell it or see it but it can kill you. Do not use a barbecue in your annexe. Remove side door panels if there is a vent or a flue inside the annexe.



**WARNING: UNZIP BOTH DOOR SECTIONS WHEN VENT OR FLUE IS LOCATED INSIDE ANNEXE. FAILURE TO DO SO MAY RESULT IN DEATH**  
This will ensure ventilation for gas & carbon monoxide required by Australian/New Zealand Standard: AS/NZS5601.2:2013



**Ensure you understand the dangers of carbon monoxide poisoning and take precautions at all times.**

### FIRE SAFETY

Annexe fabric is fire retardant but not fireproof. Do not smoke or use a naked flame in or near your annexe.

### TRIP HAZARD

Storm straps may be a trip hazard. Take care when walking around them.

[orbitairtech.com.au](http://orbitairtech.com.au)

**DEVELOPED SPECIFICALLY FOR THE AUSTRALIAN CLIMATE**  
From the Makers of the Multi-Award Winning AirOPUS® Camper Trailer

**purpleline®**  
design...innovate...improve

# orbit<sup>®</sup> AIR COMET 325 HIGH 325 WIDTH RANGE

## CARE INSTRUCTIONS CONTINUED

**NEVER REMOVE TIES OR UNFASTEN ZIPS WHILST BLADDERS ARE INFLATED - IT WILL CAUSE THE BLADDER TO FAIL.**



### BEWARE

Over inflation, opening the zips on the retaining sleeves whilst bladders are inflated, or not monitoring air pressure during extremes of heat and cold may damage the bladder or cause it to rupture.

### INFLATABLE AIR BEAMS

Your Orbit<sup>®</sup> Air Annexe has inflatable air beams which are held and protected within a stout retaining sleeve. The zips on the retaining sleeves are secured with a fabric tie and should not be undone unless you need to replace or repair a bladder. If you remove the ties for any reason while deflated, ensure you close the zips and secure them with the ties before re-inflating.

Bladders on your annexe require a maximum 7 psi of pressure so it is important to use the pump provided, which has a pressure gauge and dump valve so that this is not exceeded. Because air pressure increases when the air is warmed, we recommend that you pump to less than 7 psi in extremely hot weather or pump to 7 psi and monitor the tubes, letting air out as necessary. See the VARIATION IN TEMPERATURE section for further information. An emergency repair patch is enclosed for repair of small holes in your air beam.

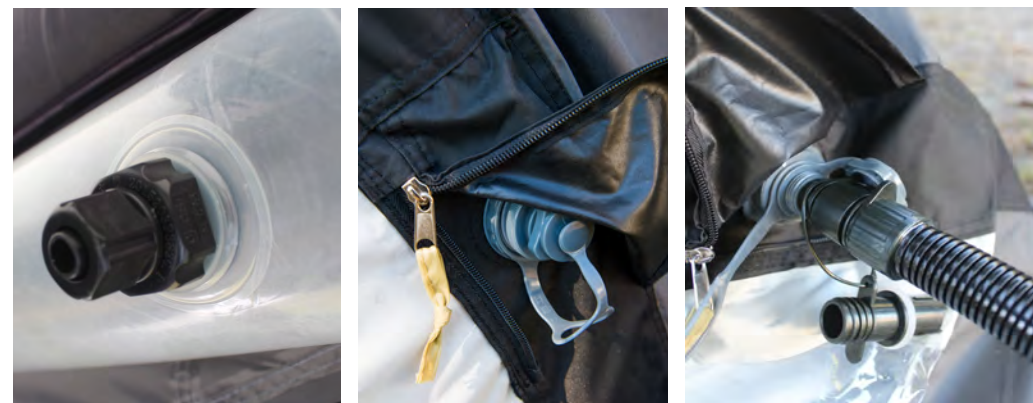
### VARIATION IN TEMPERATURE

It may be necessary to monitor the air pressure in your air tubes from time to time, especially if the weather is fluctuating or the temperature is hotter or colder than average.

**Hot Weather** - When the outside temperature rises, the air pressure in the bladders may increase, so monitor the air tubes and release air as required. Not doing this may cause the bladder to fail.

**Cold Weather** - When the outside temperature falls, the air pressure in the bladders may decrease and it may be necessary to top up the air pressure to keep the bladders firm. A drop in pressure should not be treated as a leak or puncture until further investigated.

## INFLATABLE CARAVAN ANNEXE



### VALVES

The valves on the air tubes are attached by retaining straps. The valves are not pre-fitted so you will need to screw them into place. Screw the valve body on, ensuring you do not cross-thread it. Seal the valve securely but do not over-tighten. A faulty valve may cause air tubes to deflate and this should be investigated fully.

Please note that all valves should be fully unscrewed when you take your annexe down. Do not store your annexe with the valves in place as they may become ineffective if stored whilst under compression.

### AIR PUMP

Your Orbit<sup>®</sup> Air Annexe is supplied with a manual air pump which has a pressure gauge and dump valve and has been specially designed for use on our Orbit<sup>®</sup> Air Annexes. Do not use any other type of pump. Attach the dump valve and hose to the side marked "inflate" and use the gauge to avoid over-inflation.

Always store your pump in the carry bag provided. The pump contains lubricant to function, and storing it in the bag will protect your annexe from contact with the lubricant.



[orbitairtech.com.au](http://orbitairtech.com.au)

**DEVELOPED SPECIFICALLY FOR THE AUSTRALIAN CLIMATE**  
From the Makers of the Multi-Award Winning AirOPUS<sup>®</sup> Camper Trailer

**purpleline<sup>®</sup>**  
design...innovate...improve

## INFLATABLE CARAVAN ANNEXE

### WARRANTY

Your Orbit® Air Annexe is covered by our Manufacturer's Warranty against manufacturing defects for 24 months from the date of original purchase. During this period the company undertakes to replace or repair, free of charge, any defect(s) which the company considers to be due to faulty workmanship or components/materials. Validation of the warranty requires a copy of your receipt and proof of purchase. Please note that your Orbit® Air Annexe is not a toy. Do not jump, bounce, launch yourself onto or off any air tube and do not twist, bend, wrench or handle any air beam in any such manner which will inevitably cause damage. Your annexe is an inflatable structure intended for the use of camping/caravanning and must only be used as such.

#### The following are not covered under your manufacturer's warranty

- Damage to the annexe fabric caused by not fitting the roller protector provided for the top corner of the caravan door.
- Bladder damage including, but not limited to, over inflation or unnecessary release of the sealed zips on the bladder retaining sleeves. The inflatable bladders are subject to wear and tear and will require replacement from time to time.
- General wear and tear to annexe and its components including but not limited to the main fabric, storm straps, ladder pegging bands and other fittings.
- Defects arising from neglect, misuse, or unauthorised modifications.
- Damage caused by abuse, misuse or similar damage caused by or as a result of failure to follow any instructions for erection, dismantling, storage, cleaning and general use of the annexe.
- Damage caused by packing your annexe away wet, including but not limited to colour transfer from dark coloured fabric to lighter coloured fabric.
- Damage caused by or as a result of extremes of weather including but not limited to storms, wind, hail or extreme cold.
- Moisture inside the annexe caused by condensation including but not limited to weather conditions or insufficient ventilation.
- Leakage through seams due to excessive abrasion.
- Damage caused from not storing the pump in the storage bag provided.



- Leakage through seams (including main seams) where it has not been possible to apply seam sealant during the manufacturing process or where tape has peeled away or is broken during the manufacturing process to allow for fittings such as tie points and suspension points.
- Damage due to over-tensioning, including but not limited to damaged seams, zips & pegging points.
- Broken or damaged zips, buckles or pegging points caused by undue force, jamming, incorrect pegging etc, over - tensioning etc.
- Damage due to cooking inside or near the annexe.
- UV degradation of the annexe and its components.
- Products used on permanent sites, displays or commercial use by rental companies.

The Warranty does not cover transportation or shipping costs to and from the manufacturer or their agents for repair or assessment against a Warranty claim. This does not affect your statutory rights. The manufacturer and/or their recognised agents, directors, employees or insurers will not be liable for consequential or other damages, losses or expenses in connection with or by reason of the inability to use the product for any purpose.

NOTE: Any claim(s) arising due to missing parts or faulty goods must be made before use. The manufacturer will not be responsible for any claims regarding missing parts or faulty items where the product has not been checked by the user prior to use. In the event of a product being returned for assessment, it must be sent in a completely dry and clean condition. Failure to do this will deem the product unfit for inspection.

#### INSURANCE

We highly recommend that your annexe be insured against theft, storm or accidental damage, which are not covered under your Warranty. Ensure enough people are available to erect the annexe without exerting undue stress on the annexe. This annexe is designed for touring use only. It is not suitable for static or commercial usage. Take down your annexe if extreme weather is forecast.

[orbitairtech.com.au](http://orbitairtech.com.au)

**DEVELOPED SPECIFICALLY FOR THE AUSTRALIAN CLIMATE**  
From the Makers of the Multi-Award Winning AirOPUS® Camper Trailer

 **purpleline**®  
design...innovate...improve



**orbit**<sup>®</sup>  
**AIR TECHNOLOGY**  
[orbitairtech.com.au](http://orbitairtech.com.au)

**ALSO AVAILABLE:**



Orbit<sup>®</sup> Air Capsule

Add even more space to your Orbit<sup>®</sup> Air Comet. Your annexe can be fitted with a detachable extension room Orbit<sup>®</sup> Air Capsule at either or both ends - use it as a bedroom or storage! Orbit<sup>®</sup> Air Capsule Dimensions: 230W x 160D x 180H



Orbit<sup>®</sup> Air Astro Annexe

Do you fancy adding an annexe on both sides of your caravan or camper trailer? For more annexe types from Orbit<sup>®</sup> Air Annexe range visit [orbitairtech.com.au](http://orbitairtech.com.au)

Photographs & diagrams are for illustration purposes only. Actual product may vary and any specifications are subject to change without prior notice. © All information correct at time of print. Purple Line Pty Ltd 2018.

**DEVELOPED SPECIFICALLY FOR THE AUSTRALIAN CLIMATE**  
 From the Makers of the Multi-Award Winning AirOPUS<sup>®</sup> Camper Trailer

**purpleline**<sup>®</sup>  
 design...innovate...improve